



EXCEL REPORTS PROCESSOR INTERFACE FOR NDS (USER MANUAL)

Contents

Contents	2
Summary of changes	3
1. Introduction.....	4
2. General Information.....	5
2.1 Description	5
2.2 Assumptions, Dependencies, Constraints.....	5
3. Menu	6
3.1 Menu toolbar	6
3.1.1 Main menu	6
4. Functionality	8

Summary of changes

Document Release	Date	Description	Prepared by
Version 1	24/01/2007	First version	BLS
Version 1.1	28/01/2007	Modified General Information and screenshot for Figure 4	BLS
Version 1.2	30/01/2007	Added and updated screenshots to show new % difference parameter.	BLS
Version 1.3	02/02/2007	Update screenshots to show rows present in NDS but not in Excel file.	BLS
Version 1.4	12/02/2007	Update screenshots to show new main window with toolbar icons	BLS

1. Introduction

Excel Reports Processor application will facilitate data comparison between data send by domestic traders against data existing in NDS database used by local drug control authorities.

The application will use Microsoft Excel spreadsheets as default format to load data and will process them comparing against data stored in NDS database.

2. General Information

2.1 Description

Excel Reports Processor application has been developed using .NET technologies in order to create a smooth interface for easy data comparison.

2.2 Assumptions, Dependencies, Constraints

The application will load any Microsoft Excel file in any version prior or up to Microsoft Office 2003.

The application doesn't rely on Microsoft Office to be installed on user's PC, it has its own internal procedures in order to load Excel spreadsheets.

Application assumes that **all macros have been disabled** previous to load Excel spreadsheets.

Valid EAN code for Establishment **it's mandatory**, without it, the application can't do further data processing.

3. Menu

3.1 Menu toolbar

3.1.1 Main menu

When the application is started, the Main Menu for the Application is displayed.

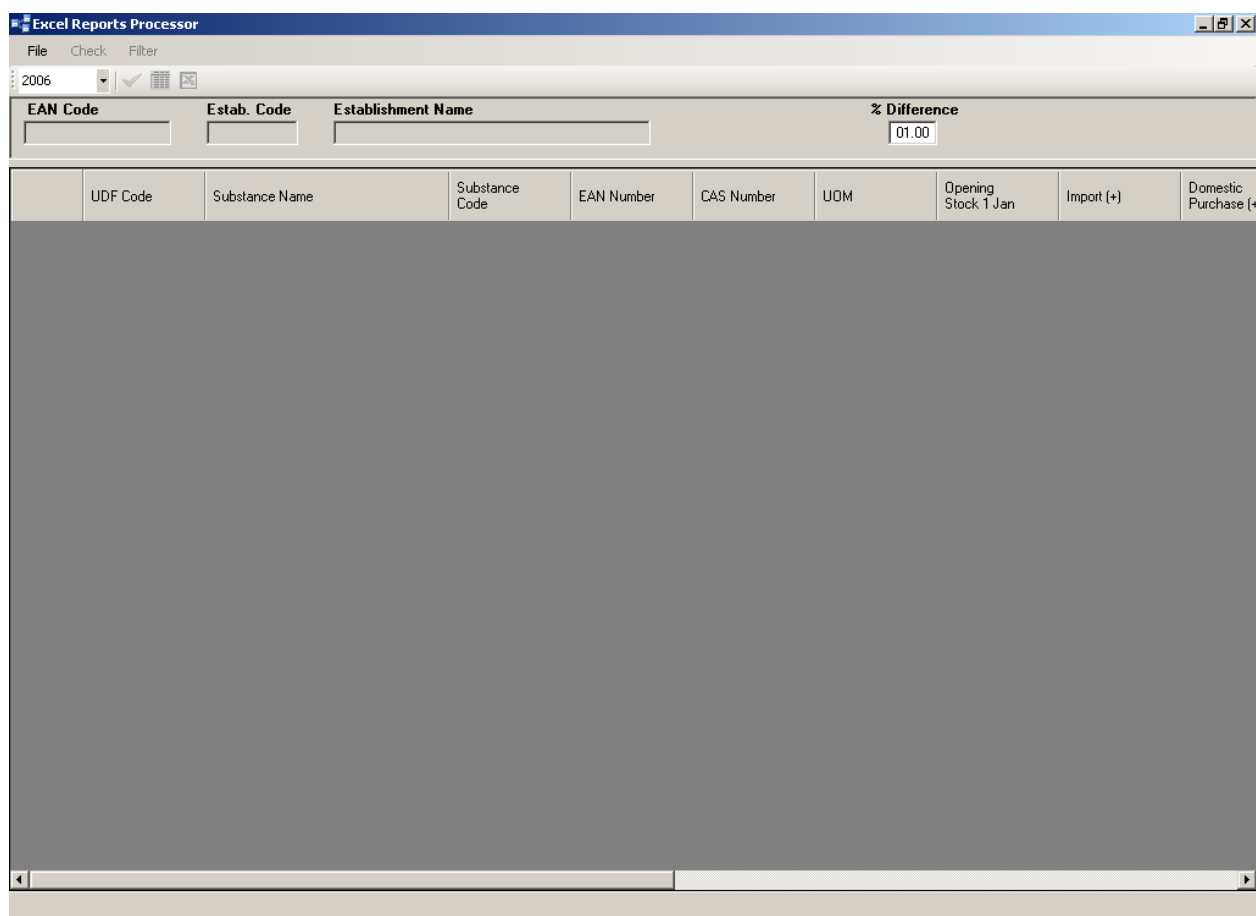




Figure 1

File Open Excel Sheet.

Check Check global validations: EAN Code for establishment and Substance Codes. Toolbar icon 

Import Export checking: validates data from Excel Sheet against existing data in NDS database. Toolbar icon 

Filter

Filters data showing All records, General Errors or Import Export errors.

Statistic Year selector

Allows selection of processing year.

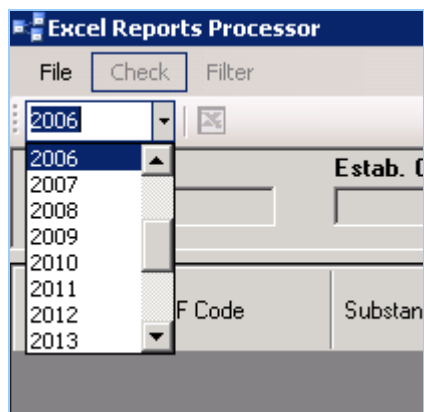


Figure 2

% Difference

Value that indicates maximum allowed difference when comparing values between Excel spreadsheet and NDS database.

By default application sets its value at 1%.

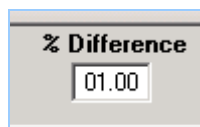
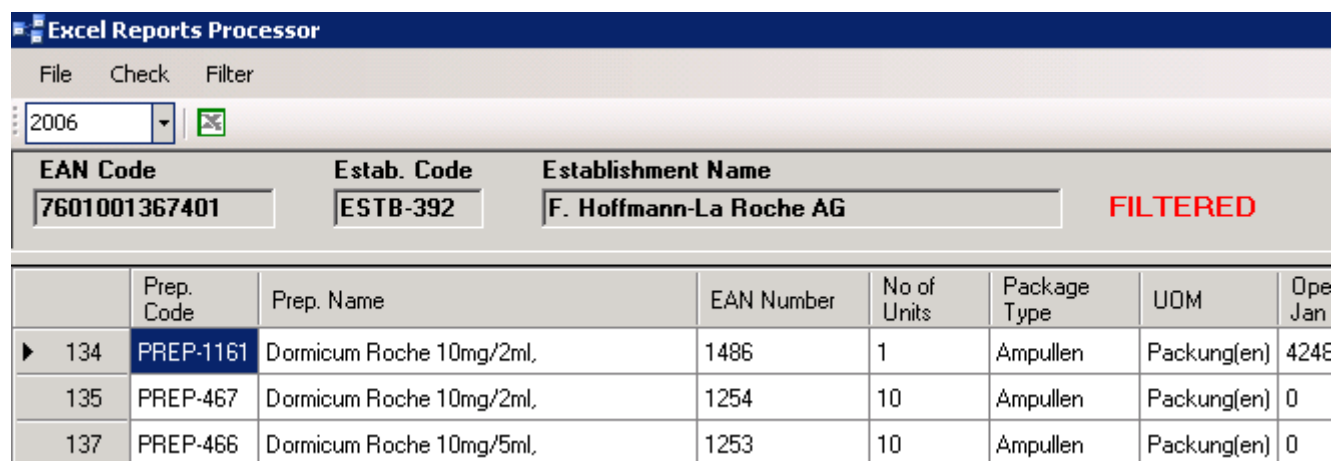


Figure 3

4. Functionality

The statistics year drop-down selector shows by default the year preceding current one, because we check statistics only after end of year when it's supposed all local Establishments have sent their reports to local drug control authorities.



	Prep. Code	Prep. Name	EAN Number	No of Units	Package Type	UOM	Ope Jan
▶ 134	PREP-1161	Dormicum Roche 10mg/2ml,	1486	1	Ampullen	Packung(en)	424E
135	PREP-467	Dormicum Roche 10mg/2ml,	1254	10	Ampullen	Packung(en)	0
137	PREP-466	Dormicum Roche 10mg/5ml,	1253	10	Ampullen	Packung(en)	0

Figure 4

When you select from main menu File – Open Excel Sheet, the file being opened by application implements the General Syntax Check, which includes checks for existence in NDS database of Establishment EAN codes and substance/preparations codes. If wrong records are found you will get following message on screen:

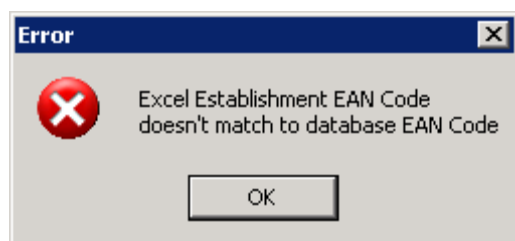


Figure 5

Later on if errors were found and Excel sheet was fixed you can proceed with next step on main menu Check – Import/Export, it checks for current Statistic Year, Current Country, Establishment and substance/preparation codes if they have correspondent matches in NDS database. When there are discrepancies application shows a message on screen indicating number of errors found:

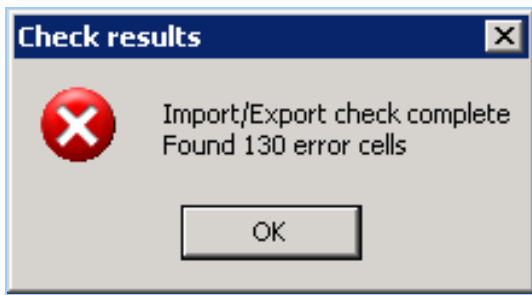


Figure 6

When the application finds errors by checking general data or Import/Export trading it will highlight wrong cells according to following convention:

1. Light green for General errors
 2. Light blue for Unknown % in NDS database
 3. Red when exceeding % difference entered by user
 4. Yellow for rows in NDS that don't exist in Excel spreadsheet
- These rows are numbered with * symbol.

Excel Reports Processor											
File Check Filter											
2009		ESTAB-493		Novartis Pharma AG		FILTERED		% Difference 01.00			
Prep. Code	Prep. Name	EAN Number	No of Units	Package Type	UOM	Opening Stock 1 Jan	Import (+)	Domestic Purchase (+)	Manufacture (+)	Export (-)	
59	PREP-34	Cafergot-PB 100 mg.	7680219430534	10	Suppositorien	Packung(en)	9860	0	0	0	
114	PREP-1543	DIA LYAM 10mg/2ml.	7611746050148	1	Ampullen	Packung(en)	0	0	792797	415606	
115	PREP-1544	DIA LYAM 30mg/2ml.	7611746050155	1	Ampullen	Packung(en)	0	0	279793	279043	
116	PREP-1542	DIA LYAM 5mg/2ml.	7611746050131	1	Ampullen	Packung(en)	0	0	52651	52501	
590	PREP-551	Ritalin 10 mg.	Nov1487914	1	Kilogramm	Kilogramm	81.715	17422170	0	0	17422170
591	PREP-288	Ritalin 10 mg.	/68U2U/36U119	30	Tabletten	Packung(en)	2668/2	337023	0	0	446983
594	PREP-553	Ritalin 10 mg.	Nov0425173	20	Tabletten	Packung(en)	110008	337023	0	0	446983
595	PREP-554	Ritalin LA 20 mg.	Nov1487882	100	Tabletten	Packung(en)	108	145643	0	0	145643
603	PREP-555	Rivotril 0.5 mg Tabletten, Bulk	Nov1567807	30	Retard-Tabletten	Packung(en)	10284	157701	0	0	147433
*1	PREP-1454	Alprazolam capsule 1 mg.		1	capsules	package(s)		3352			300
*2	PREP-1457	Alprazolam tablets 1 mg.		50	tablets	package(s)		5			
*3	PREP-1101	Methylphenidate HCl Sandoz tablet.		30	tablets	package(s)					43750
*4	PREP-1072	Methylphenidate HCl Sandoz tablet.		1	tablets	package(s)					4022100
*5	PREP-1433	Methylphenidate HCl tablets 10 mg.		30	tablets	package(s)		131250			
*6	PREP-972	Ritalin 10 mg.		20	tablets	package(s)		337023			446983
*7	PREP-624	Ritalin 10 mg.		1	tablets	package(s)		17422170			11600450
*8	PREP-1099	Ritalin 10 mg.		1000	tablets	package(s)					7091.65
*9	PREP-943	Ritalin 10 mg.		30	tablets	package(s)					219930
*10	PREP-1388	Ritalin SR 20mg.		30	slow release tablets	package(s)					1944
*11	PREP-936	Ritalin 10 mg.		30	tablets	package(s)		45000			60000

Figure 7

Along with this coloring convention on each cell a yellow pop-up window will appear explaining the reason:

The screenshot shows the 'Excel Reports Processor' application window. At the top, there is a menu bar with 'File', 'Check', and 'Filter'. Below the menu bar, there is a search field containing '2006'. The main area displays a table with columns: 'EAN Code', 'Estab. Code', 'Establishment Name', and '% Difference'. The current view is filtered to show data for 'Novartis Pharma AG' with a '% Difference' of '00.00'. Below this, a larger table lists various substances with columns: 'UDF Code', 'Substance Name', 'Substance Code', 'EAN Number', 'CAS Number', 'UOM', 'Opening Stock 1 Jan', 'Import (+)', 'Domestic Purchase (+)', 'Manufacture (Synthetic) (+)', and 'Export (-)'. Row 207 is highlighted in yellow, and a pop-up window is displayed over the 'Import (+)' cell (value 29.642), showing the text: 'Difference: Unknown', 'Excel value: 29.642', and 'NDS value: Unknown'. The status bar at the bottom indicates 'Row 207/373'.

EAN Code	Estab. Code	Establishment Name	% Difference
7601001307445	ESTB-493	Novartis Pharma AG	00.00

UDF Code	Substance Name	Substance Code	EAN Number	CAS Number	UOM	Opening Stock 1 Jan	Import (+)	Domestic Purchase (+)	Manufacture (Synthetic) (+)	Export (-)
16	CE002MAL	Ergometrin-hydrogenmaleat	CE002	129-51-1	Gramm	60896	0	2509	0	0
19	CE0030.5.TAR	Ergotamin tartrat	CE003	379-79-3	Gramm	88220.134	10.25	108164.03	214340	83161
33	CP006D	(+)-Pseudoephedrine	CP006	90-82-4	Gramm	5063608.31	0	341.497	0	0
116	NH001HCL.1	Diamorphine hydrochloride monohydrate	NH001	7611746050124	1502-95-0	Gramm	0	27365	0	0
207	PA004...	Alprazolam	PA004	7611746165002	28981-97-7	Gramm	0.01	29.642	0	0.3
224	PC003HCL	Chlordiazepoxide hydrochloride	PC003	7611746998235	438-41-5	Gramm	430.847	10	0	0
231	PC008...	Cloxacolam	PC008	7611746178002	24166-13-0	Gramm	8006.1	47000	0	47000
287	PM001...	Mazindol	PM001	7611746201007	22232-71-9	Gramm	47143.426	11.5	96	1710
297	PM007HCL	Methylphenidate hydrochloride	PM007	7611746122104	298-59-9	Gramm	2712390.038	1553702	2342.18	2576541
373	FZ002...	Zolpidem	FZ002	7611746360001	82626-48-0	Gramm	0	0.05	0	0

Figure 8