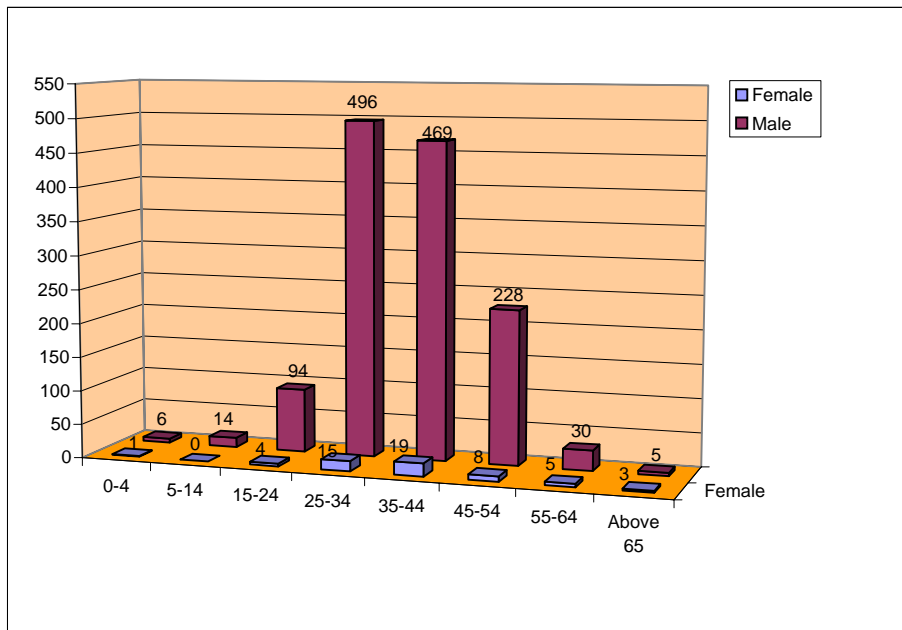


**Death cases according to gender and age in Iran until 21 March 2006**

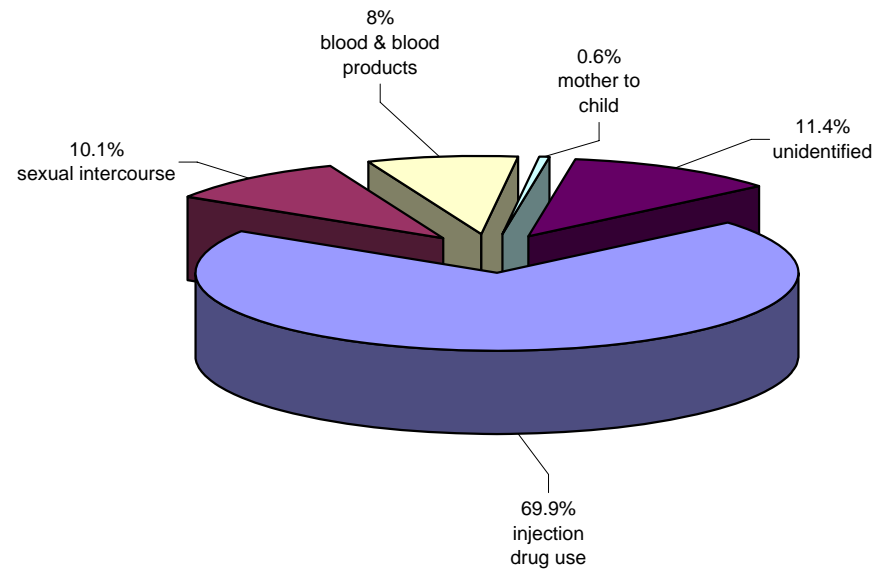
| Age                 | Male         |            | Female    |            | Total       |            |
|---------------------|--------------|------------|-----------|------------|-------------|------------|
|                     | Quantity     | Percentage | Quantity  | Percentage | Quantity    | Percentage |
| 0-4                 | 6            | 0.4        | 1         | 1.8        | 7           | 0.5        |
| 5-14                | 14           | 1.0        | 0         | 0.0        | 14          | 1.0        |
| 15-24               | 94           | 7.0        | 4         | 7.3        | 98          | 7.0        |
| 25-34               | 496          | 37.0       | 15        | 27.3       | 511         | 36.6       |
| 35-44               | 469          | 34.9       | 19        | 34.5       | 488         | 34.9       |
| 45-54               | 228          | 17.0       | 8         | 14.5       | 236         | 16.9       |
| 55-64               | 30           | 2.2        | 5         | 9.1        | 35          | 2.5        |
| Above 65            | 5            | 0.4        | 3         | 5.5        | 8           | 0.6        |
| <b>Total</b>        | <b>1342</b>  | <b>100</b> | <b>55</b> | <b>100</b> | <b>1397</b> | <b>100</b> |
| <b>Unidentified</b> | 142 * (9.6%) |            | 2 (3.5%)  |            | 144 (9.3%)  |            |
| <b>Total</b>        | 1484         |            | 57        |            | 1541        |            |

\* Percentage of unidentified cases to all cases.



## Death cases according to gender and method of transmission in Iran until 21 March 2006

| Gender        | Injection drug use |            | Sexual intercourse |            | Blood & blood products |            | Mother to child |            | Unidentified |            | Total    |            |
|---------------|--------------------|------------|--------------------|------------|------------------------|------------|-----------------|------------|--------------|------------|----------|------------|
|               | Quantity           | Percentage | Quantity           | Percentage | Quantity               | Percentage | Quantity        | Percentage | Quantity     | Percentage | Quantity | Percentage |
| <b>Male</b>   | 1067               | 99.1       | 125                | 80.1       | 114                    | 92.7       | 9               | 90.0       | 169          | 96.6       | 1484     | 96.3       |
| <b>Female</b> | 10                 | 0.9        | 31                 | 19.9       | 9                      | 7.3        | 1               | 10.0       | 6            | 3.4        | 57       | 3.7        |
| <b>Total</b>  | 1077               | 100        | 156                | 100        | 123                    | 100        | 10              | 0          | 175          | 100        | 1541     | 100        |



Reported death cases among HIV/AIDS patients divided by year until 21 March 2006

