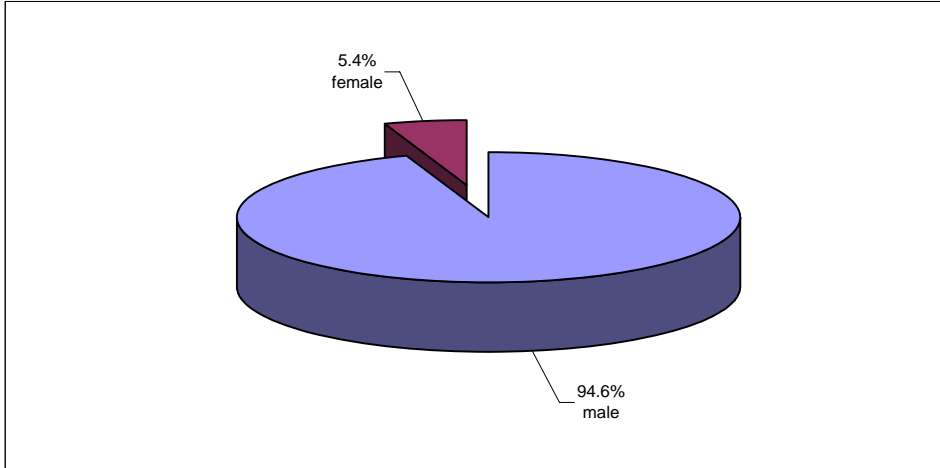


HIV/AIDS cases according to gender in Iran until 21 March 2006

Gender	HIV/AIDS infected		AIDS infected		Death	
	Quantity	Percentage	Quantity	Percentage	Quantity	Percentage
Male	12336	94.6	673	91.4	1484	96.3
Female	704	5.4	63	8.6	57	3.7
Total	13040	100	736	100	1541	100

Note: AIDS cases that have been obtained through flowcitometric method has not been included in this calculation.

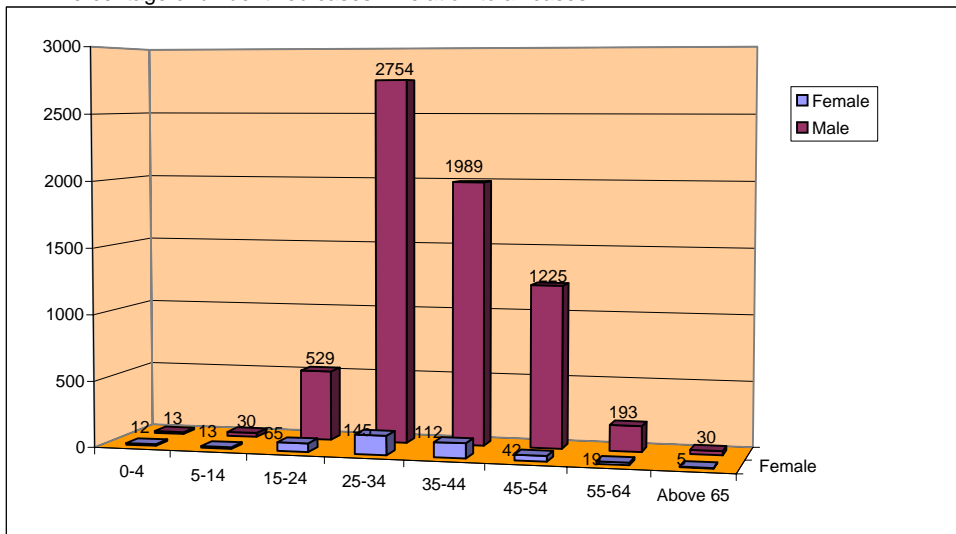


* All cases including dead and alive that have entered AIDS phase.

HIV/AIDS infected cases according to gender and age until 21 March 2006

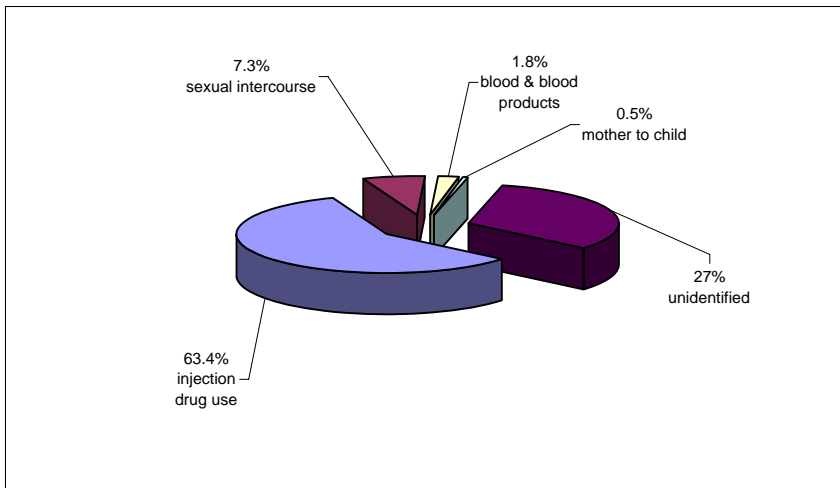
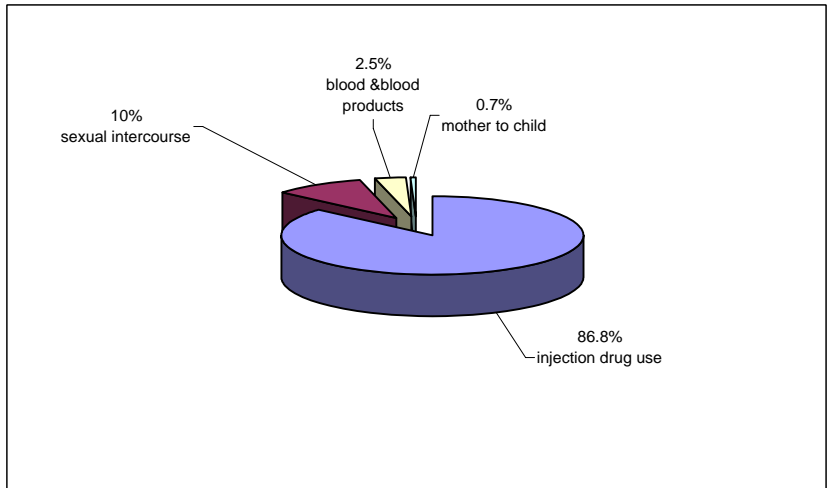
Gender	Male		Female		Total	
	Quantity	Percentage	Quantity	Percentage	Quantity	Percentage
0-4	23	0.2	15	2.6	38	0.4
5-14	27	0.3	20	3.4	47	0.5
15-24	616	6.7	71	12.2	687	7
25-34	3854	41.9	223	38.2	4077	41.6
35-44	2733	29.7	152	26	2885	29.5
45-54	1611	17.5	68	11.6	1679	17.1
55-64	303	3.3	30	5.1	333	3.4
Above 65	40	0.4	5	0.9	45	0.5
Total	9207	100	584	100	9791	100
Unidentified	3129* (25.4%)		120 (17%)		3249 (24.9%)	
Total	12336		704		13040	

* Percentage of unidentified cases in relation to all cases.



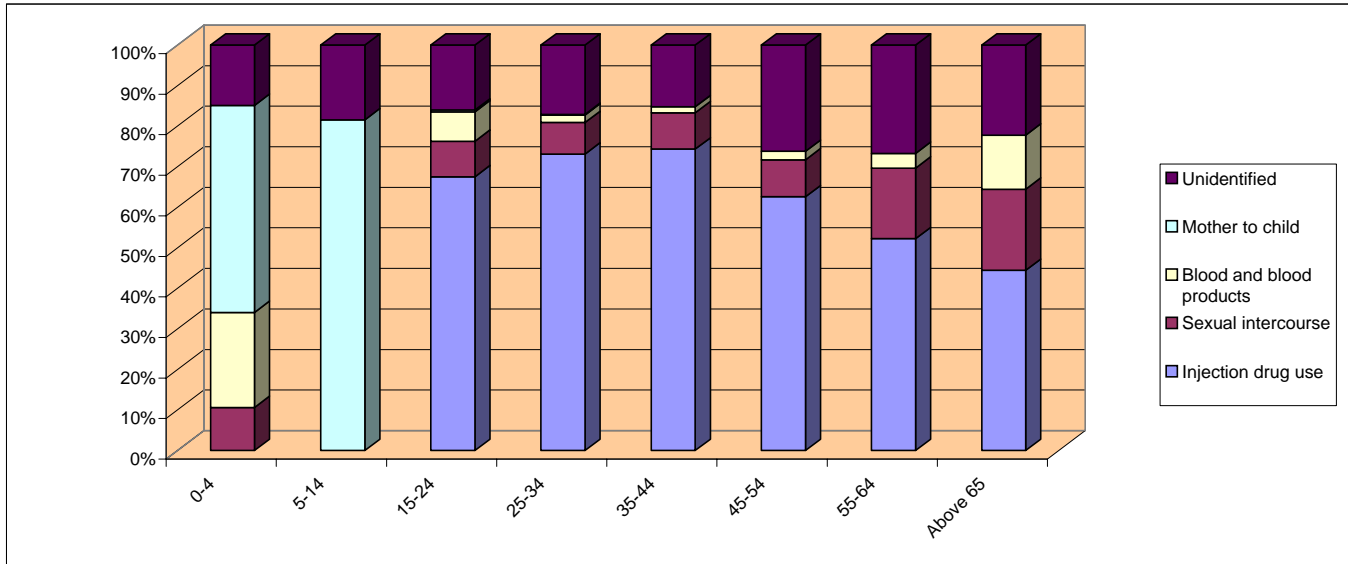
HIV/AIDS infected cases according to gender and transmission until 21 March 2006

Gender	Injection drug use		Sexual intercourse		Blood & blood products		Mother to child		Unidentified		Total	
	Quantity	Percentage	Quantity	Percentage	Quantity	Percentage	Quantity	Percentage	Quantity	Percentage	Quantity	Percentage
Male	8189	99.1	575	60.6	223	92.9	35	53	3314	94.1	12336	94.6
Female	74	0.9	374	39.4	17	7.1	31	47	208	5.9	704	5.4
Total	8263	100	949	100	240	100	66	100	3522	100	13040	100



HIV/AIDS infected cases according to method of transmission and age in Iran until 21 March 2006

Age	Injection drug use		Sexual intercourse		Blood and blood		Mother to child		Unidentified		Total	
	Quantity	Percentage	Quantity	Percentage	Quantity	Percentage	Quantity	Percentage	Quantity	Percentage	Quantity	Percentage
0-4	0	0.0	5	0.6	11	4.7	24	37.5	7	0.4	47	0.5
5-14	0	0.0	0	0.0	0	0.0	31	48.4	7	0.4	38	0.4
15-24	464	6.8	60	7.0	50	21.5	3	4.7	110	6.1	687	7.0
25-34	2981	43.6	318	36.9	76	32.6	5	7.8	697	38.8	4077	41.6
35-44	2145	31.4	258	30.0	43	18.5	1	1.6	438	24.4	2885	29.5
45-54	1051	15.4	153	17.8	35	15.0	0	0.0	440	24.5	1679	17.1
55-64	174	2.5	58	6.7	12	5.3	0	0.0	89	4.9	333	3.4
Above 65	20	0.3	9	1.0	6	2.6	0	0.0	10	0.6	45	0.5
Total	6835	100	861	100	233	100	64	100	1798	100	9791	100
Unidentified	1428* (17.3%)		88 (9.3%)		7 (2.9%)		2 (2%)		1724 (48.9%)		3249 (24.9%)	
Total	8263		949		240		66		3522		13040	



Reported HIV/AIDS cases according to year until 21 March 2006

