

National Database System (NDS)

United Nations International Drug Control Programme (UNDCP)

MS-WORD® & COREL® – WORD PERFECT REPORTS INSTALLATION GUIDE

TABLE OF CONTENTS

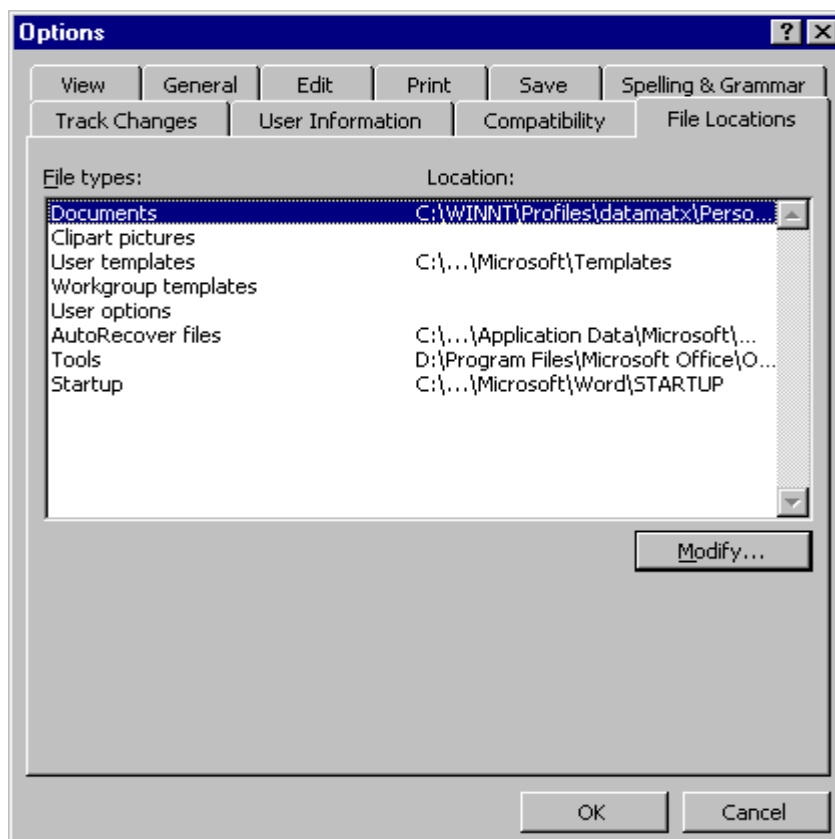
Procedure to install Reports	3
WORD Installation.....	3
WordPerfect Installation.....	4
ODBC Configuration	5
For WORD 8.0,Office 2000, WordPerfect 8.0,9.0 and Oracle 8.0.5.....	5
For WORD 8.0,Office 2000, WordPerfect 8.0,9.0 and Oracle 8.1.5.....	5
Sample settings in NDS.INI.....	6
Assumptions	8
Execution of Reports in Microsoft® Word 8.0	8
Execution of Reports in Corel® WordPerfect 8.0	8
Annexure – I.....	9
REPORTS PROCEDURES DETAILS.....	10
LEVEL 2 PROCEDURES CALLS LEVEL 1 PROCEDURES	10

Procedure to install Reports

- Copy NDS.INI file in system root directory (for ex. C:\WINDOWS or D:\WinNt).
- Set the various paths specified in NDS.INI. Ensure the availability of directories mentioned in NDS.INI
- Copy unlogo.bmp file in C:\
- Copy NDS.dll into 'system' directory of system root directory (for ex. C:\WINDOWS\SYSTEM or D:\WinNt\SYSTEM32)
- Copy NDS_OLE.DLL into 'system' directory of system root directory (for ex. C:\WINDOWS\SYSTEM or D:\WinNt\SYSTEM32) and register this dll by using regsv32 <pathname>\NDS_OLE.DLL from Run of Startup menu
- Copy font file "UPCA.TTF" to font directory.
 - In case of Windows Nt® - it is \Winnt\Fonts\

WORD Installation

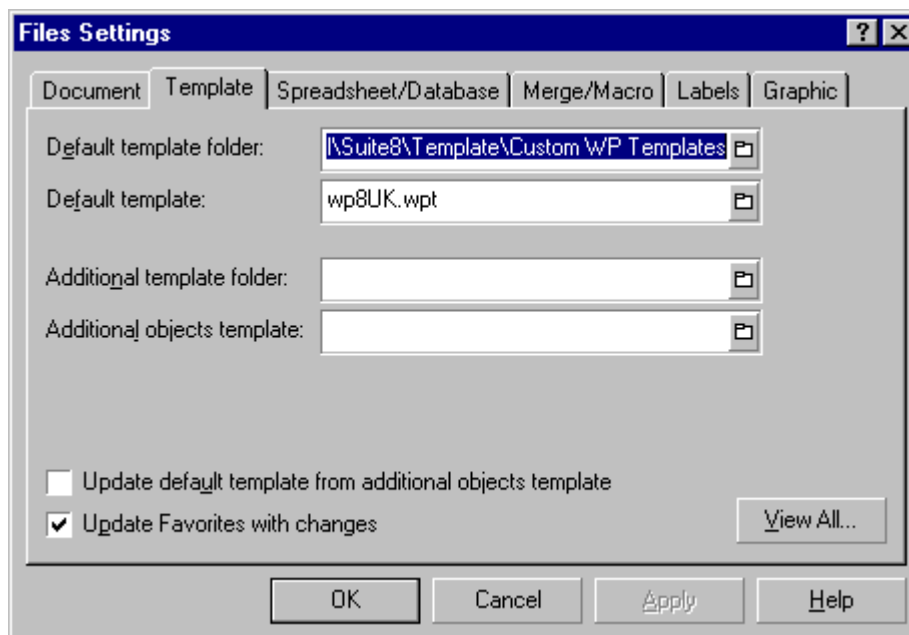
- Open the Microsoft ® Word .Then Press ALT + T + O Key .This will show you a Dialog Box . Choose the File Locations Tab Page. Note down the **User Template File location Path**.



- Make NDS directory in **User Template File location Path** . Copy all the "ReportX.dot" (X is A,B,C,D etc) WORD template files in the NDS directory & Write the path into WORDTEMPLATEPATH key in NDS.INI of NDS section .
- Copy other templates in the directory specified in REPORTPATHWORD key in NDS.INI

WordPerfect Installation

- Copy all the ".wpd" and ".wcm" WordPerfect template/Macro files in the directory specified in REPORTPATHWP key in NDS.INI
- Open the Corel ® WordPerfect. Then Press ALT + T + N Key .This will show you a Screen . Double Click the “Files” option, it will show you a dialog box. Go to the Template Tab Page & note down the **Default Template Folder Path**.
- Make NDS directory in **Default Template Folder Path**. Copy TMPRepX.wpt (X is A,B,C,D.. etc) in Template directory of WordPerfect (for ex. c:\corel\suit8\template\Custom WP Templates\NDS for WP8.0 & WP9.0).



ODBC Configuration

Oracle Client	ODBC Driver Required	Remarks
ORACLE 8.0.5	ODBC Driver 8.0.5.7.0	
ORACLE 8.1.5	ODBC Driver 8.01.56	
ORACLE 8.1.6	Default ODBC Driver	

For WORD 8.0,Office 2000, WordPerfect 8.0,9.0 and Oracle 8.0.5

- Run Oracle Installer
- Click on 'From' select win95.prd OR nt.prd, depending upon operating system, from 'win32/install/' directory
- Select Oracle8 ODBC Driver 8.0.5.7.0
- From Control Panel / ODBC Data Sources create a **User DSN** named NDS32. Do not give User ID and Password

For WORD 8.0,Office 2000, WordPerfect 8.0,9.0 and Oracle 8.1.5

- Run Oracle Installer
- Click on 'Browse' and select Products.jar and click on 'Installed Products'.
- Select Oracle8 ODBC Driver 8.01.56
- From Control Panel / ODBC Data Sources create a **User DSN** named NDS32. Do not give User ID and Password

Sample settings in NDS.INI

[NDS]

USERID=NDS32
LANGUAGE=ENG
DSNNAME=NDS32
REPORTPATHWP=d:\Program Files\NDS_40\WP\
REPORTPATHWORD=d:\Program Files\NDS_40\WORD\
EXCELPATH=d:\Progra~1\NDS_40\XLS\
EXCELEXEPATH=c:\PROGRA~1\micros~1\office\excel.exe
WORDEXEPATH=c:\PROGRA~1\micros~1\office\winword.exe
WORDTEMPLATEPATH=C:\WINNT\Profiles\Admin1\Applic~1\Microsoft\Templates\nds
WPEXEPATH=d:\PROGRA~1\Corel\WORDPE~1\programs\wpwin9.exe
WPTEMPLATEPATH=d:\PROGRA~1\Corel\WORDPE~1\template\CUSTOM~1\NDS
SEARCH=CODE
HELPPATH=d:\Program Files\NDS_40\HELP\
ISREPORTRUNNING=N
REPORTOUTPUTSWORD=d:\Program Files\NDS_40\PRTFILE\WORD\
REPORTOUTPUTSWP=d:\Program Files\NDS_40\PRTFILE\WP\
HOMEDIR=d:\Program Files\NDS_40\
EDIPATH=d:\Program Files\NDS_40\EDI\
CURRENTPRTFILENAME=

VERSION=1.0

CURRENTRPTFILENAME=.wpd

[EDI]

FORM=
EDIREPORT=d:\Program Files\NDS_40\

[FTP]

USER=NDS32
PASS=NDS32
IP=8
ROOT=/

[SERVER]

DBMS=OR8 ORACLE 8.0
DATABASE=
USERID=
DATABASEPASSWORD=
LOGPASSWORD=#!\$SoS2pRP1iVP
SERVERNAME=NDS5
LOGID=#!\$1Ki2pch1iQZ
LOCK=
DBPARAM=
PROMPT=0
AUTOCOMMIT=0

[ARQ]

SRDPATH=d:\PROGRA~1\NDS_40\ARQ\SRD\
ARQQUESTIONSEXEPATH=d:\PROGRA~1\NDS_40\ARQ\
ARQRESPONSESEXEPATH=d:\PROGRA~1\NDS_40\ARQ\
ARQPRINTSEXEPATH=d:\PROGRA~1\NDS_40\ARQ\
ARQCOUNTRY=
PBORCADLL=d:\PROGRA~1\NDS_40\SHARED\pborc60.dll
RESPONSEKEYPREFIX=180800155306

[IMPORTEXPORT]

SHOWWARNINGS=N

[REPORT]

COMINGFROMPB=Y
USERID=NDS32
PASSWORD=#!\$14X1RfJ\$sa3
REPORTNAME=FORMLIC
COUNTRYCODE=
YEAR=
QUARTER=
RADIOOPTION=
SUPPFLAG=
SUPPNUMBER=
REFERENCENO=
REQUESTNO=
CROSSREFNO=

Assumptions

- Unlogo.bmp file is available in C:\ directory for WP to show UN logo.
- Oracle is loaded and NDS database (all schema objects) is already loaded.

Execution of Reports in Microsoft® Word 8.0

- Start Microsoft® Word
- Select File -> New Menu option
- Select Generate ReportX.dot template
- The procedure after this is similar to the one followed in NDS version 3.3e

Execution of Reports in Corel® WordPerfect 8.0

- Start Corel® WordPerfect
- Select File -> New Menu option (For WordPerfect 9.0 Select File -> New From Project)
- Select the Corel WordPerfect Project. In the CREATE NEW tab Select NDS option. Click on the required report name. Then click on Create button.
- The procedure after this is similar to the one followed in NDS version 3.3e

Annexure – I

INCB REPORTS

#	Report Name	Page Numbers	Schedule Indicator	Remarks
1	Report A	1-12	1,2,4	Criteria For Report A <ul style="list-style-type: none"> • Schedule Indicator • INCB Indicator
2	Report B	Page 4,5: Page 6: Page 7: Page 8: Supplement: Page 1:	1,2,4 No Indicators 1,2,4	Criteria For Report B <ul style="list-style-type: none"> • Schedule Indicator • INCB Indicator
3	Report C	Page 3,4,5 : Page 6,7: Page 8 Part 1 : Part 2 : Part 3 :	1,2,4 1,2,4 1,2,4	Criteria For Report C <ul style="list-style-type: none"> • Schedule Indicator • INCB Indicator
4	Report D	Page 2,3,4 : Page 5,6 : Page 7,8 : Page 9,10 : Page 11,12,13: Page 14,15,16 : Page 17,18,19 :	1,2 1,2 1,2,3,4 1,2,3,4 1 1 2	Criteria For Report D <ul style="list-style-type: none"> • Schedule Indicator • INCB Indicator
5	Report AP	1-3	2	Criteria For Report AP <ul style="list-style-type: none"> • Schedule Indicator • INCB Indicator
6	Report BP	Page 1 Part 1: Part 2: Page 2:	2 3 4	Criteria For Report BP <ul style="list-style-type: none"> • Schedule Indicator • INCB Indicator
7	Report P	Page 4 Page 5 Page 6,7,8 Page 9,10 Page 11,12 : Page 13 :	1 2,3 4 1,2 3,4 1,2,3,4	Criteria For Report P <ul style="list-style-type: none"> • Schedule Indicator • INCB Indicator

REPORTS PROCEDURES DETAILS

LEVEL 2 PROCEDURES CALLS LEVEL 1 PROCEDURES

List of Components

	Level1 (Procedure)	Level2 (Procedure)	Level1 (Tables)	Level2 (Tables)
Common				
	NDS_RPC_FORMAT_GMS	NDS_RPT_PRC_FILENAME		NDS_RPT_ERRORS
	NDS_PRC_REMARKS	NDS_RPT_PRC_QUARTERNAM E		
		NDS_RPT_PRC_FORMAT_MGS		
Report A				
	NDS_PRC_AINC	NDS_RPT_PRC_REPA	NDS_PRT_FORMARPTDATA	NDS_PRT_FORMACRITERIA
	NDS_PRC_ALL			NDS_FORMA_EXTRA
	NDS_PRC_AOTH			NDS_PRT_FORMASUB_TEMP
Report B				
	NDS_PRC_BINC	NDS_RPT_PRC_REPB	NDS_PRT_FORMBRPTDATA	NDS_PRT_FORMB_CRITERIA
	NDS_PRC_BALL			NDS_FORMB_EXTRA
	NDS_PRC_BOTH			NDS_PRT_FORMBCRITERIA_SUPP
	NDS_PRC_BSUPP			
Report C				
	NDS_PRC_CINC	NDS_RPT_PRC_REPC	NDS_PRT_FORMCRPTDATA	NDS_PRT_FORMC_CRITERIA
	NDS_PRC_CALL			NDS_FORMC_EXTRA
	NDS_PRC_COTH			
	NDS_PRC_CT34			
Report D				
	NDS_PRC_DINC	NDS_RPT_PRC_REPD	NDS_PRT_FORMDRPTDATA	NDS_PRT_FORMD_CRITERIA
	NDS_PRC_DT2			NDS_FORMD_EXTRA
	NDS_PRC_DT3			
	NDS_PRC_DT6			
	NDS_PRC_SPACE			
	NDS_RPT_PRC_WORDWR			

	AP				
	NDS_RPT_PRC_DT7				
Report A/P					
	NDS_PRC_APINC	NDS_RPT_PRC_REPAP	NDS_PRT_FORMAPRPTDATA	NDS_PRT_FORMAP_CRITERIA	
	NDS_PRC_APALL			NDS_FORMAP_EXTRA	
	NDS_PRC_APOTH				
Report B/P					
	NDS_PRC_BPINC	NDS_RPT_PRC_REBPB	NDS_PRT_FORMBPRPTDATA	NDS_PRT_FORMBP_CRITERIA	
	NDS_PRC_BPALL			NDS_FORMBP_EXTRA	
	NDS_PRC_BPOTH				
Report P					
	NDS_PRC_PINC	NDS_RPT_PRC_REPP	NDS_PRT_FORMPRPTDATA	NDS_PRT_FORMP_CRITERIA	
	NDS_PRC_PALL			NDS_FORMP_EXTRA	
	NDS_PRC_POTH				
Report IE					
	NDS_PRC_IEED	NDS_RPT_PRC_REPIE_ENDO	NDS_PRT_IERPTDATA	NDS_PRT_FORMIE_CRITERIA	
	NDS_PRC_IEER	NDS_RPT_PRC_REPIE_IMP		NDS_FORMIE_EXTRA	
	NDS_PRC_IEEA	NDS_RPT_PRC_REPIE_EXP			
	NDS_PRC_IEIR	NDS_RPT_PRC_REPIE_CERT			
	NDS_PRC_IEIA	NDS_RPT_PRC_REPIEPEXP			
	NDS_PRC_IEIC				
	NDS_PRC_IECR				
Report LIC					
	NDS_RPT_PRC_LICREQ	NDS_RPT_PRC_REPLIC	NDS_PRT_LICRPTDATA	NDS_PRT_FORMLIC_CRITERIA	
	NDS_RPT_PRC_LICAURVK	NDS_RPT_PRC_REPLICWP		NDS_FORMLIC_EXTRA	



National Database System

Reports Installation Guide