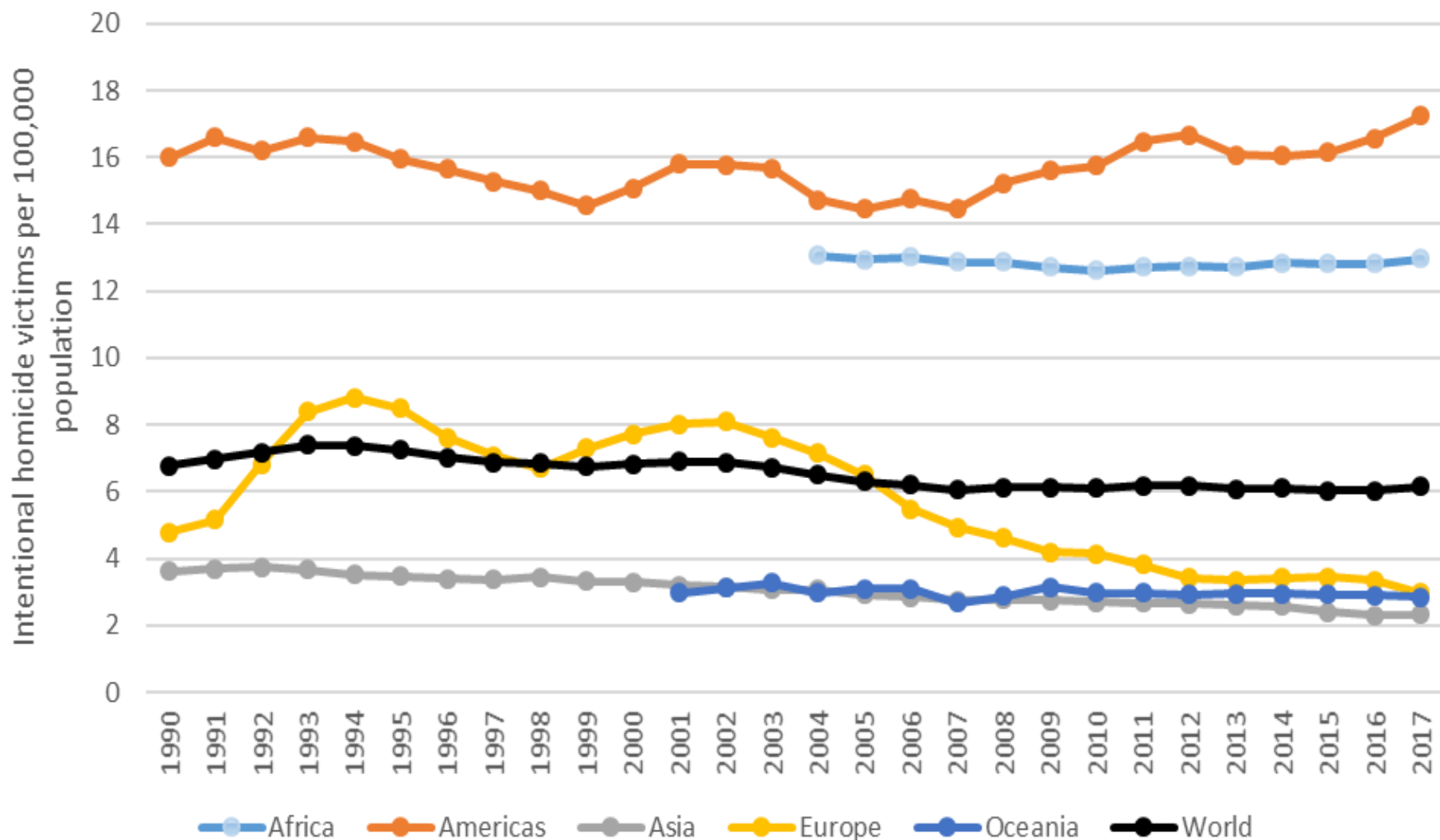
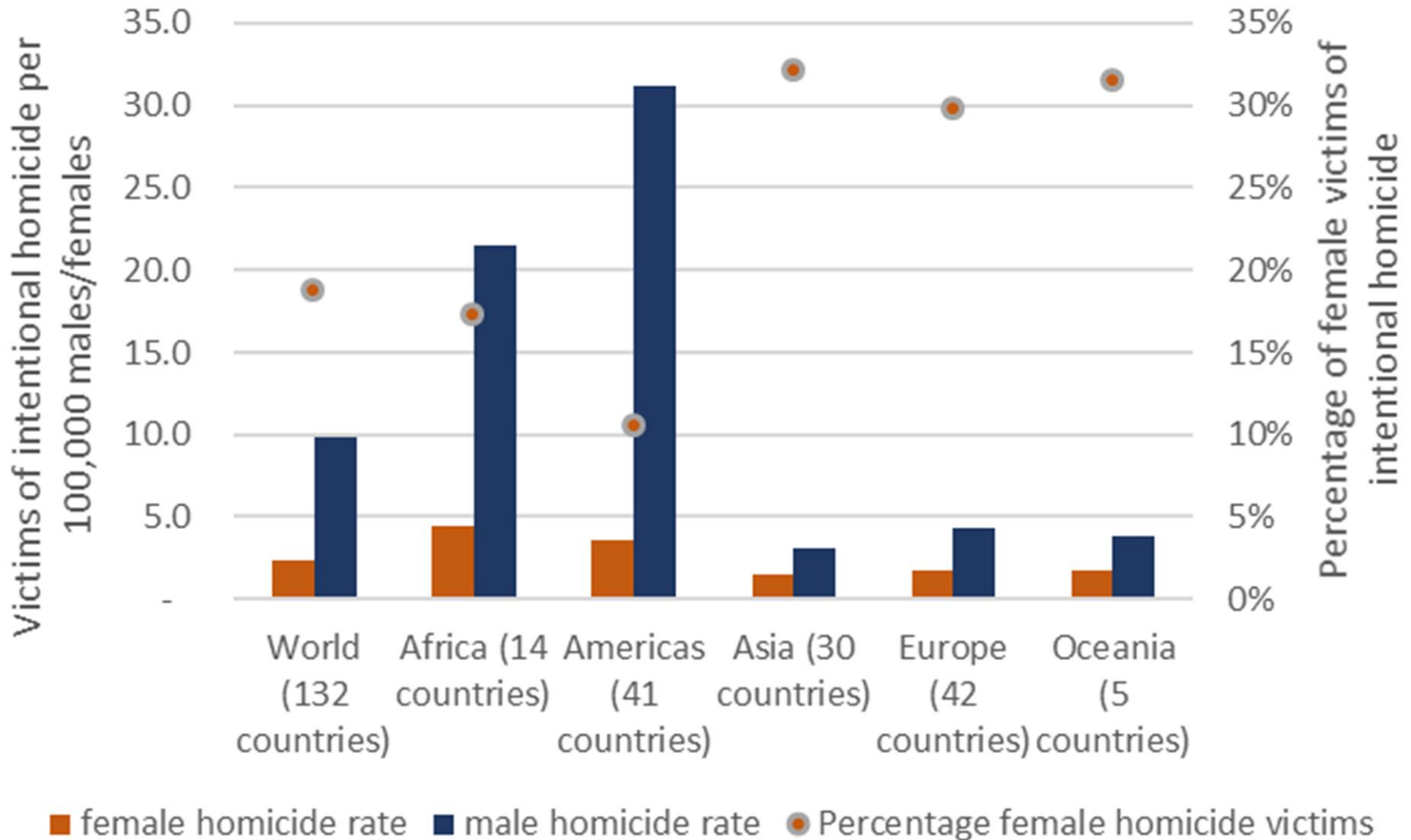


- SDG target 16.1 Significantly reduce all forms of violence and related death rates everywhere
- Indicator 16.1.1 Number of victims of intentional homicide per 100,000 population, by sex and age
- SDG indicators are used to monitor trends: for homicide, administrative statistics can be used
- SDG framework has a strong emphasis on the disaggregation of data

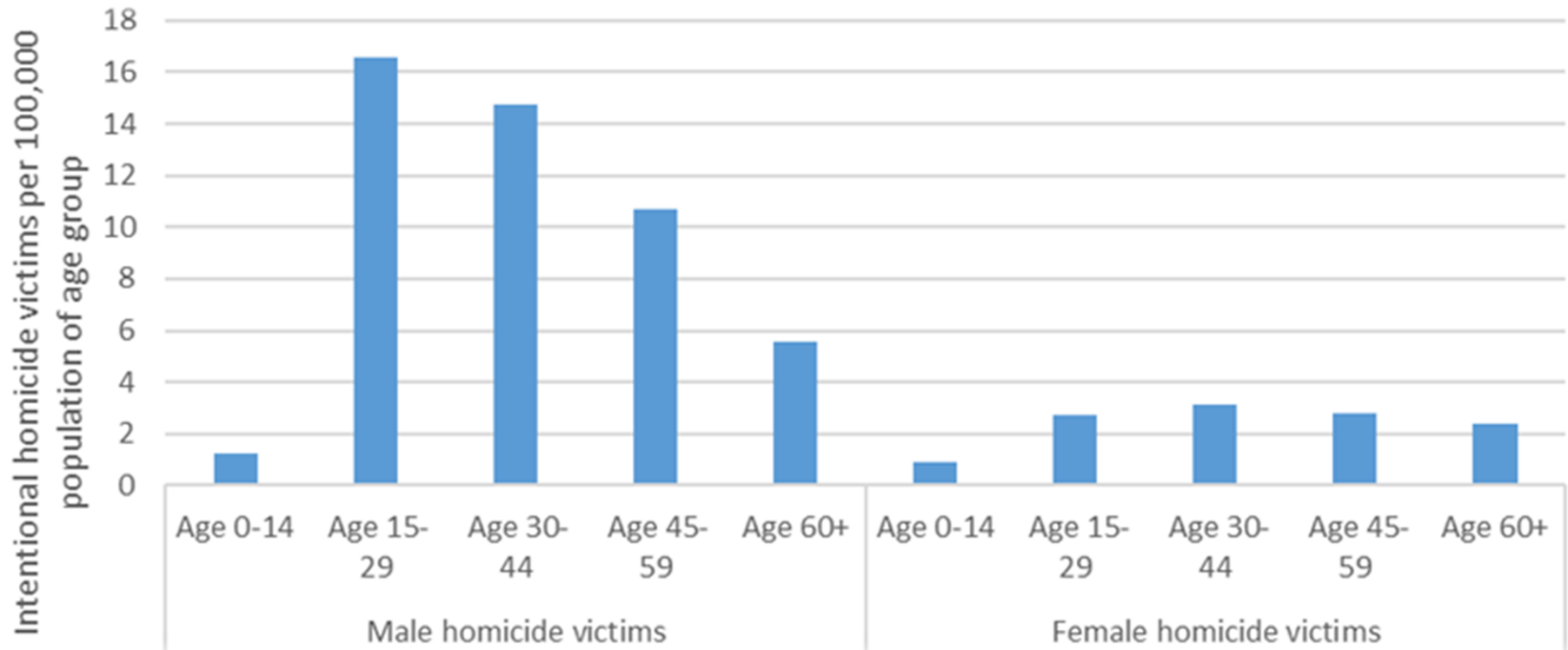
# Trends in homicide rates, by region, 1990-2017



# Homicide rates, by region and by sex, 2017



# Homicide rate, by sex and age group, 2017



# Victims of homicide and intimate partner/ family related homicide, by sex, 2016

