



UNODC

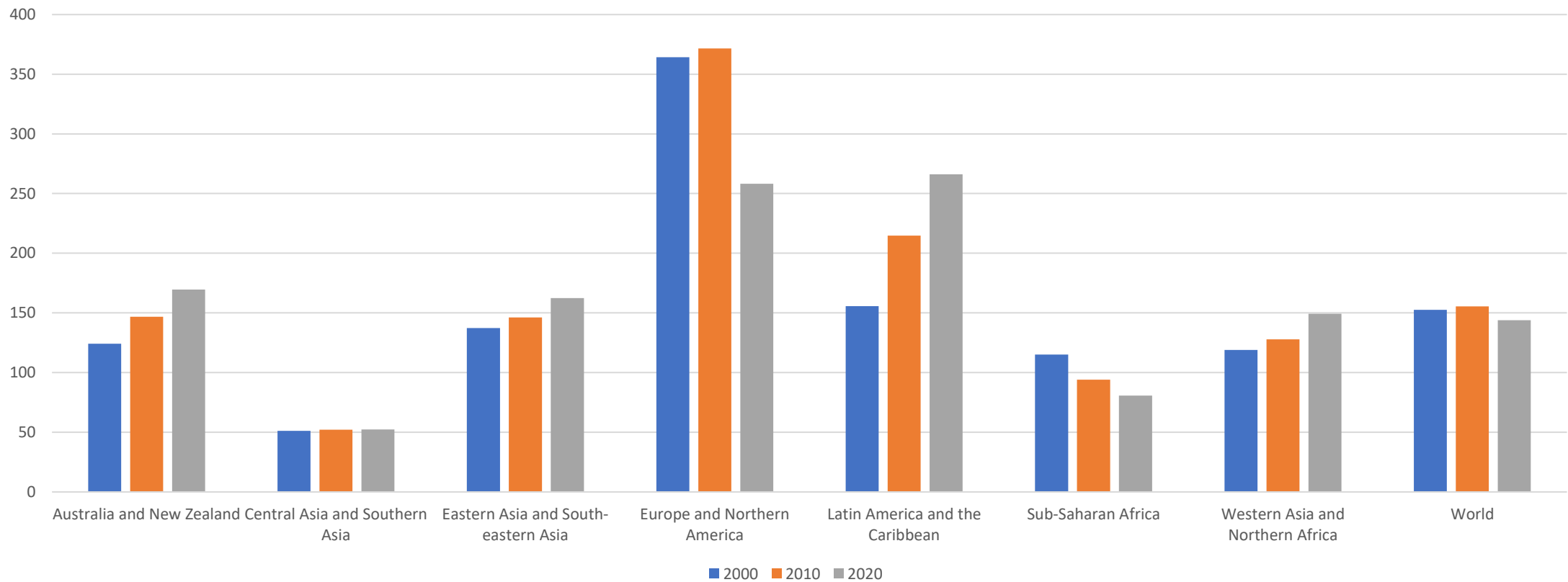
United Nations Office on Drugs and Crime

Improving prison conditions; Reducing reoffending through rehabilitation and reintegration

*CCPCJ Thematic Discussions on the implementation of the Kyoto Declaration
6 December 2022*

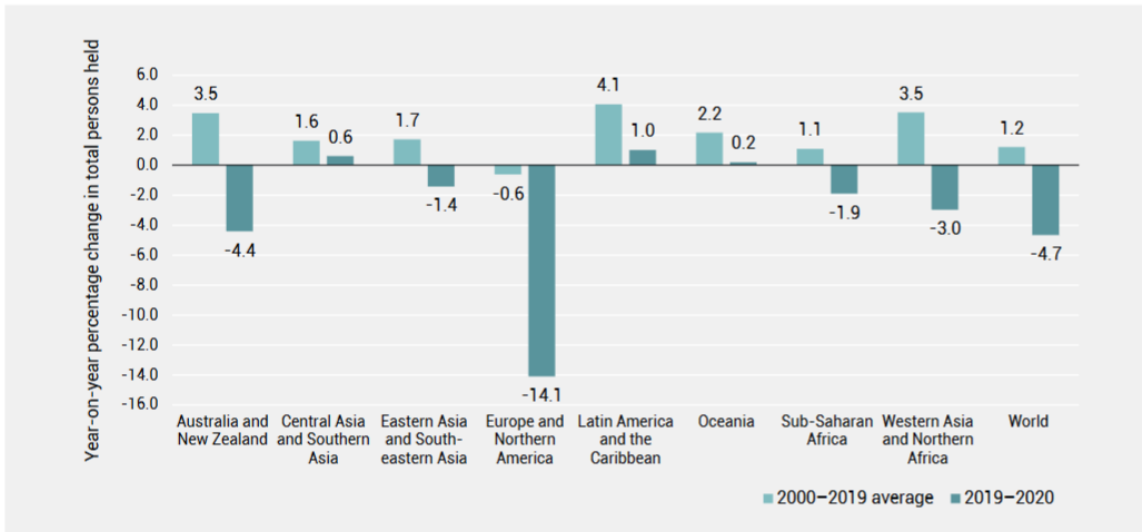
Prison population: Different trends depending on the region

Number of prisoners per 100,000 population, by region, 2000, 2010 and 2020



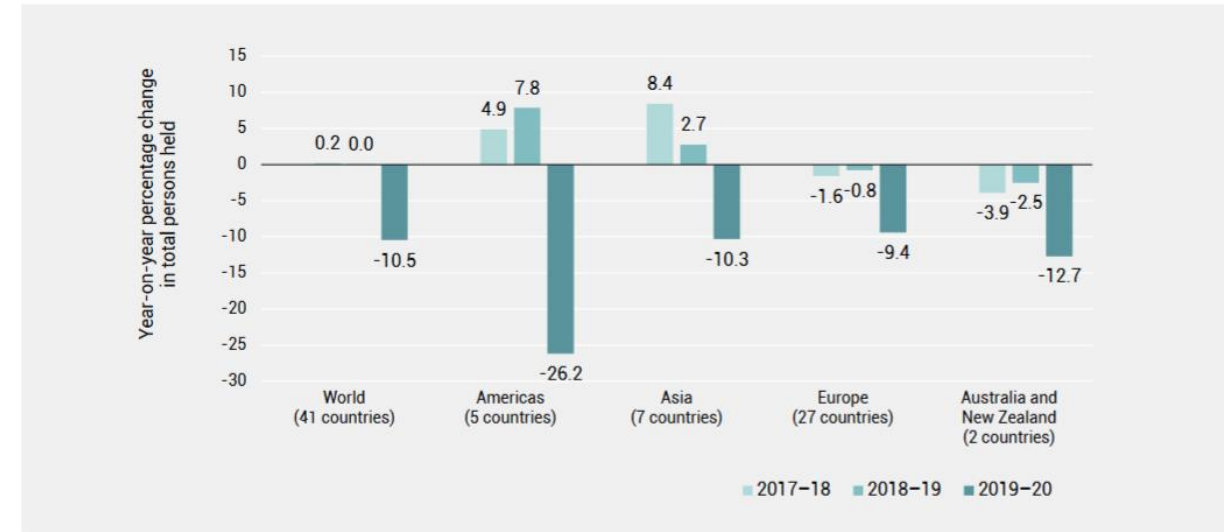
COVID-19 impact: Decrease in the number of persons held in detention and convictions

Figure 10: Year-on-year change (%) in total persons held in detention, by region



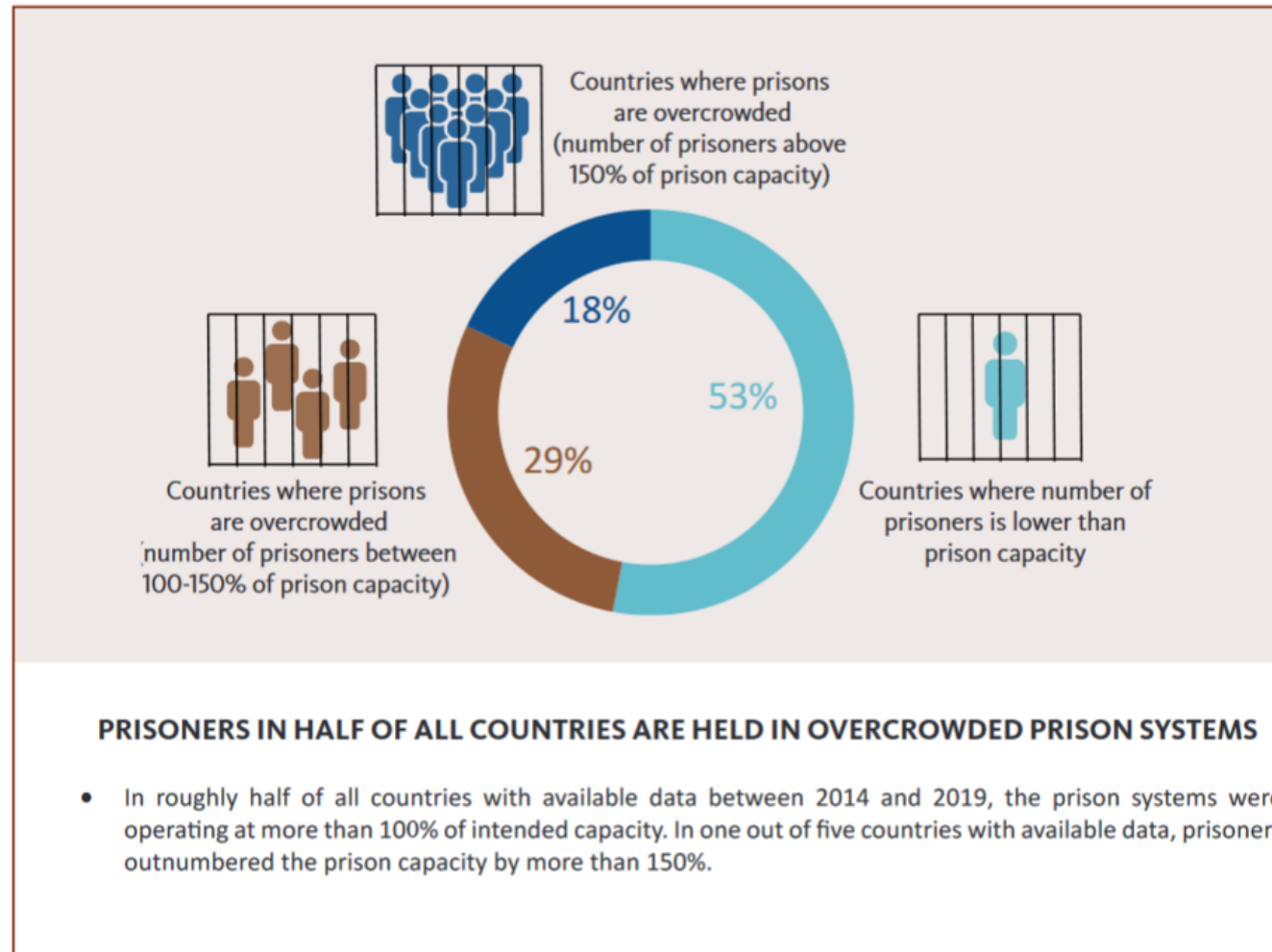
Source: UNODC estimates based on national data collected via the United Nations Crime Trends Survey and the World Prison Brief.

Figure 11: Year-on-year change (%) in total persons convicted, by region



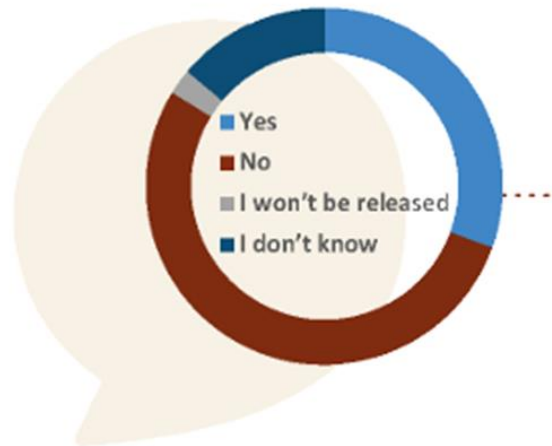
Source: Based on national data from 41 countries that reported on the total number of persons convicted every year between 2017 and 2020 via the United Nations Crime Trends Survey. Countries included are Chile, Grenada, Mexico, El Salvador, United States of America, Azerbaijan, China Hong Kong SAR, Kazakhstan, Republic of Korea, Mongolia, Turkey, Uzbekistan, Albania, Austria, Bulgaria, Bosnia and Herzegovina, Switzerland, Czechia, Germany, Denmark, Spain, Estonia, Finland, France, United Kingdom (Northern Ireland), Croatia, Hungary, Lithuania, Luxembourg, Latvia, Montenegro, Norway, Portugal, Romania, Russian Federation, Serbia, Slovakia, Slovenia, Sweden, Australia, and New Zealand.

Prisoners in half of all countries are held in overcrowded prison systems



UNODC's pilot qualitative research on recidivism

DEVELOPING BETTER POLICIES ON REHABILITATION



Are you receiving the services you need to stay out of prison?



Preparing prisoners to transition from custody to community is something they wish was done better



The lived experience of prisoners is an integral and often missing element of evidence-based policy for supporting rehabilitation

Thank you!

**Tejal Jesrani, Program Officer
Crime Research Section
Research and Trend Analysis Branch**

tejal.jesrani@un.org