



# Regulatory prevention of environmental crime

2022 CCPCJ Expert Discussions on Crimes that Affect the Environment

Iina Sahramäki | Thematic Session I, 14.2.2022



# AGILE-prevention of environmental crime?

Adaptable to the specific crime and its situational context

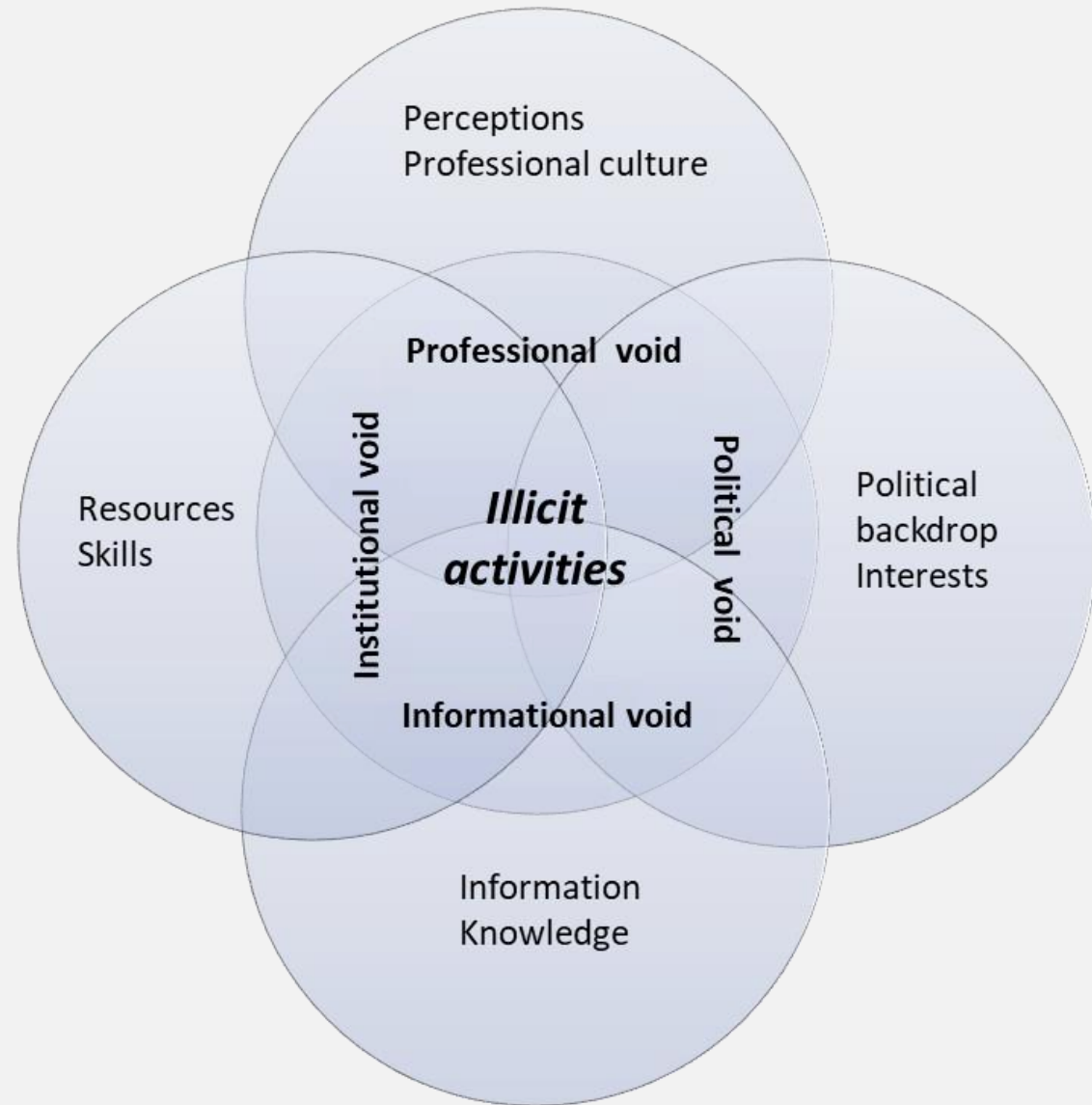
Incentive-based in order to promote compliance

Evaluated and analysed

Legitimate in causes and consequences

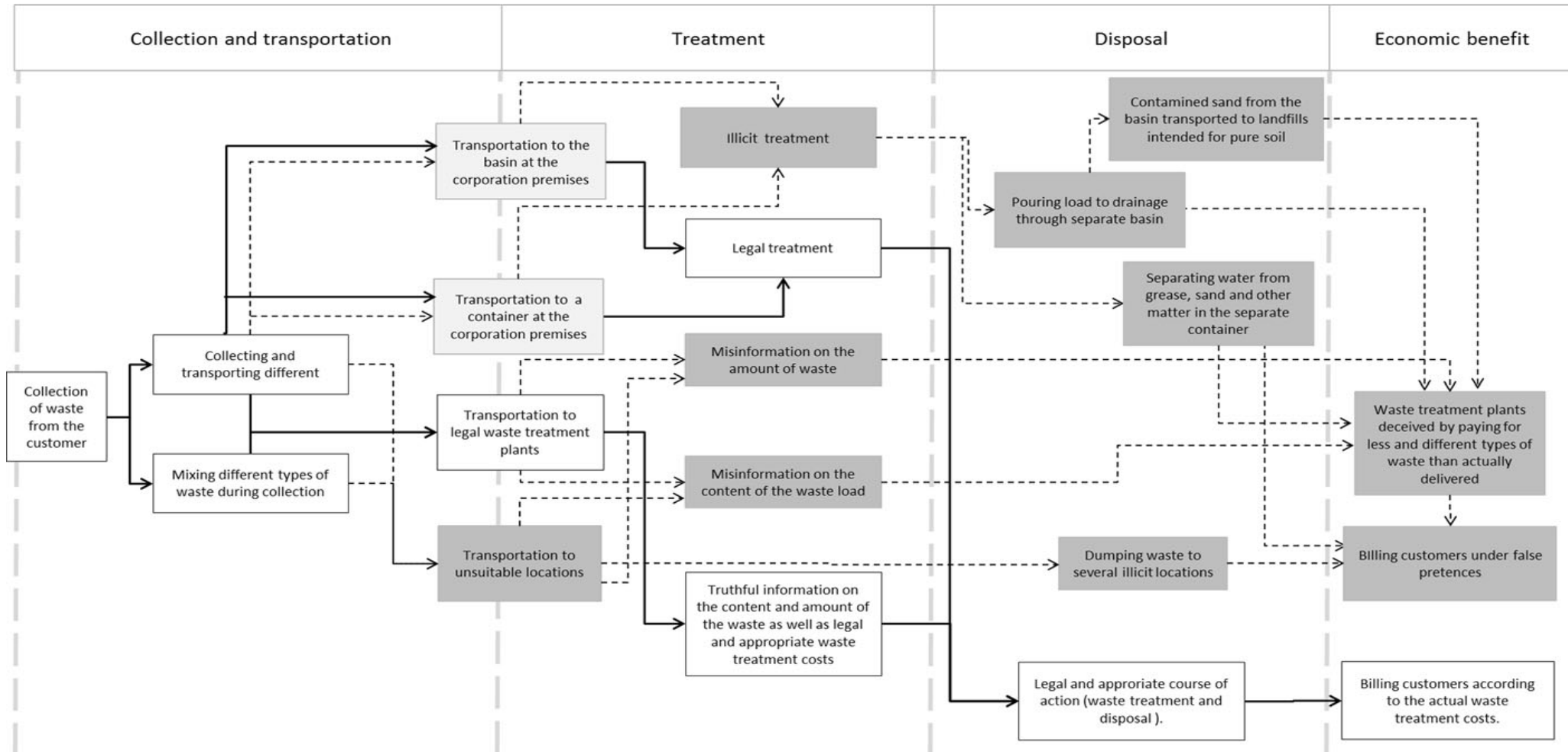
Germane to actors while responding to jurisdictional and geographic context

# Illustration 1. Regulatory voids



# Illustration 2.

## Crime script analysis of waste crime





# Key points to consider

A

Regulatory deficiencies weaken adaptability, appropriateness and legitimacy of preventive work.

*Enforcement chain from start to finish needs to be addressed as an interdependent process.*

B

Professional vantage points direct authority response to environmental harm.

*Shared understanding of when environment is protected through criminal law is needed.*

C

Economic aspects underlie and direct prevention of environmental crime.

*Enhancing preventive work through economic indicators is required.*



**HEUNI**

The European Institute for  
Crime Prevention and Control,  
affiliated with the United Nations

