



Regulatory prevention of environmental crime

2022 CCPCJ Expert Discussions on Crimes that Affect the Environment

Iina Sahramäki | Thematic Session I, 14.2.2022



AGILE-prevention of environmental crime?

Adaptable to the specific crime and its situational context

Incentive-based in order to promote compliance

Evaluated and analysed

Legitimate in causes and consequences

Germane to actors while responding to jurisdictional and geographic context

Illustration 1. Regulatory voids

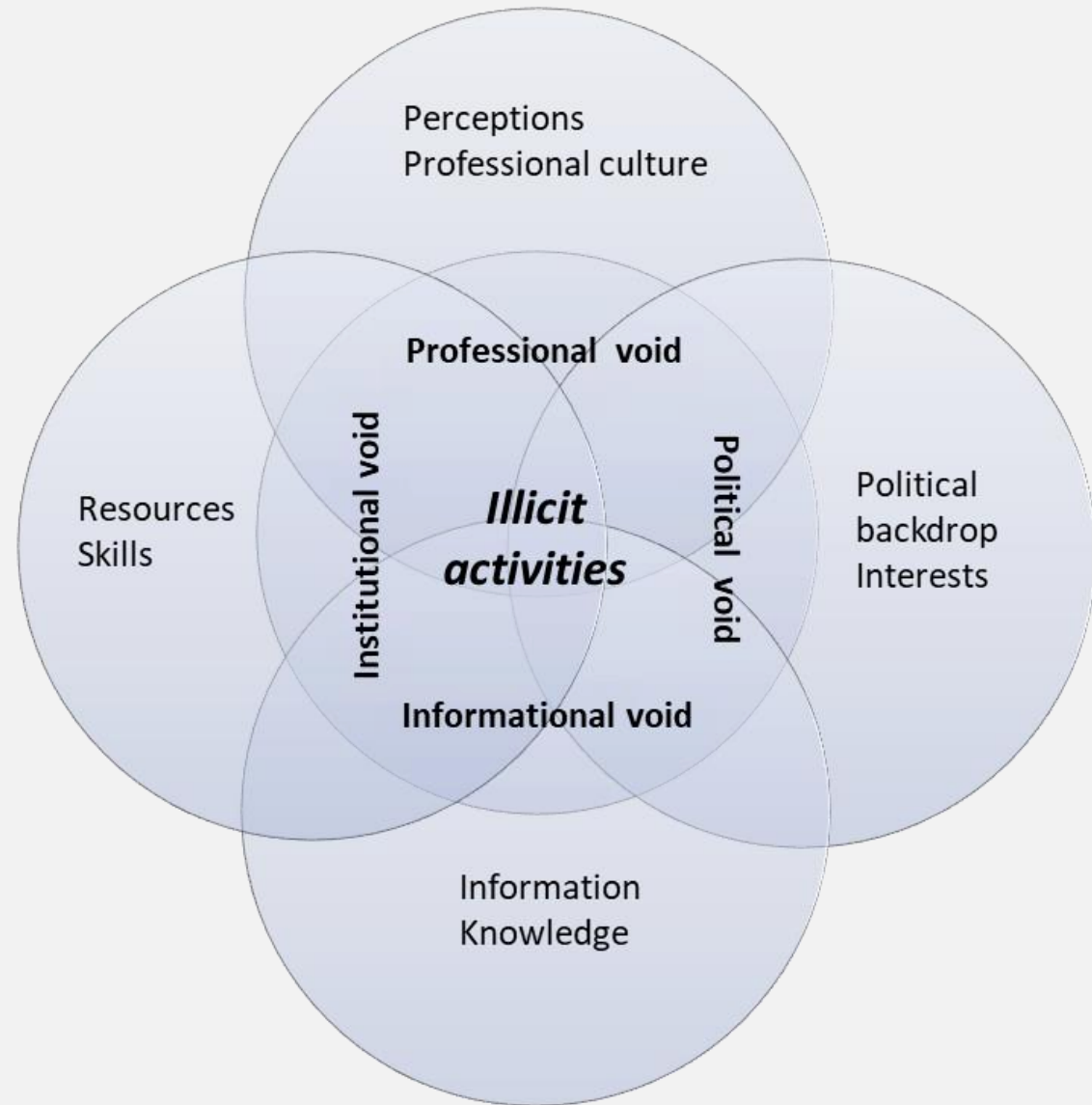
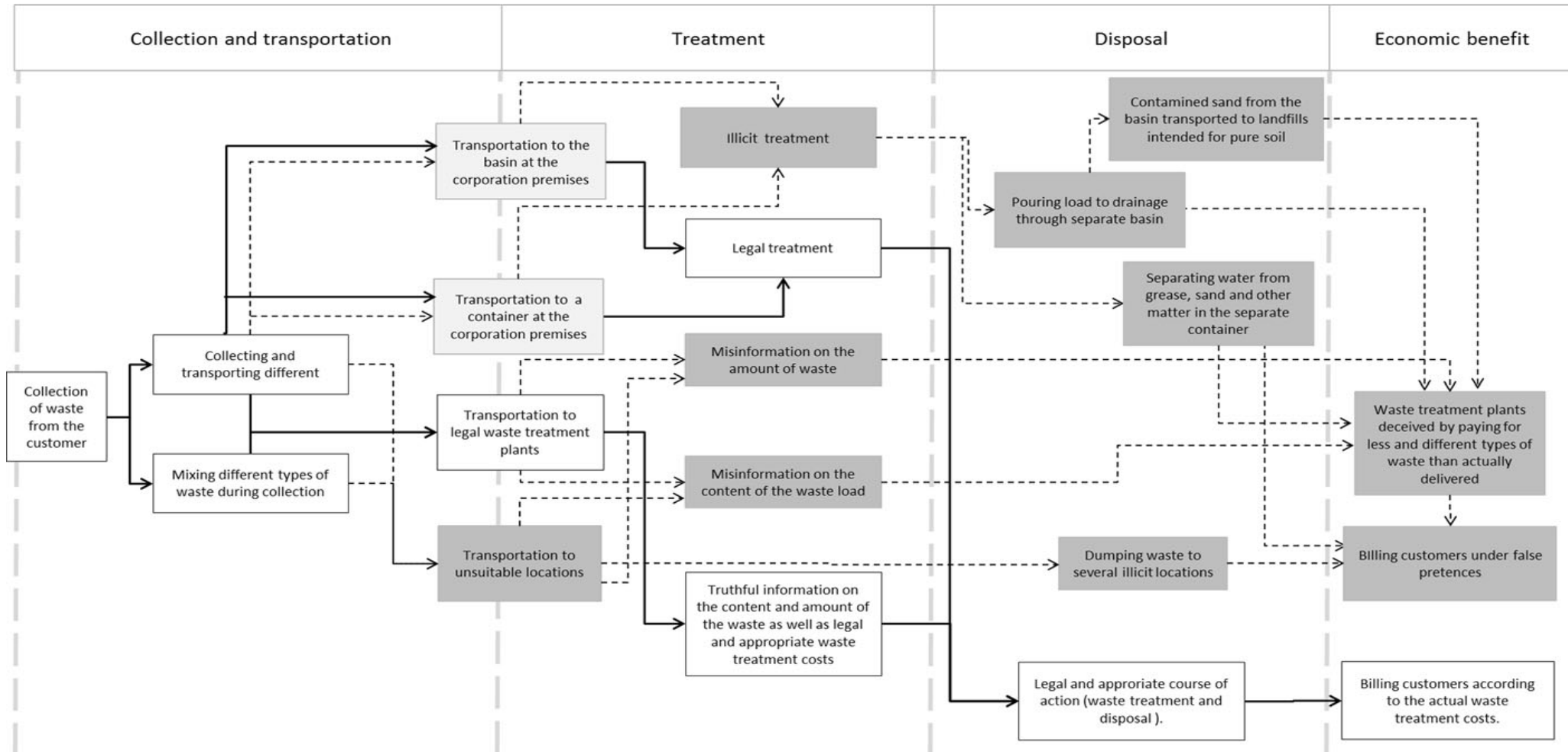


Illustration 2.

Crime script analysis of waste crime





Key points to consider

A

Regulatory deficiencies weaken adaptability, appropriateness and legitimacy of preventive work.

Enforcement chain from start to finish needs to be addressed as an interdependent process.

B

Professional vantage points direct authority response to environmental harm.

Shared understanding of when environment is protected through criminal law is needed.

C

Economic aspects underlie and direct prevention of environmental crime.

Enhancing preventive work through economic indicators is required.



HEUNI

The European Institute for
Crime Prevention and Control,
affiliated with the United Nations

