



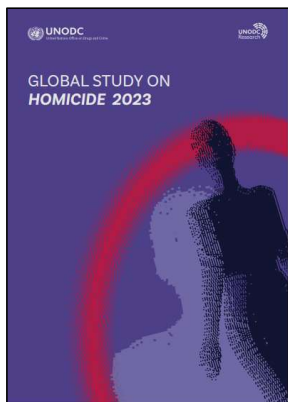
# UNODC

United Nations Office on Drugs and Crime



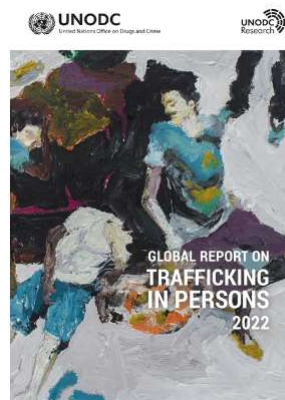
## Measuring Progress against the Agenda 2030 from UNODC's perspective

Global Study on Homicide 2023

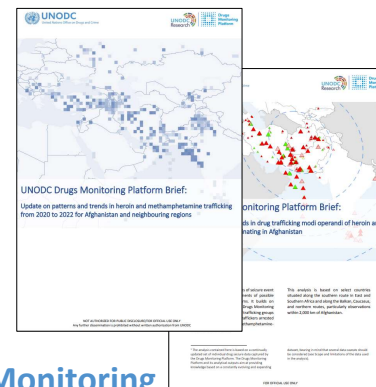


World Wildlife Crime Report 2024

World Drug Report



Global report on Trafficking in Persons



Drug Monitoring Platform Briefs

Data Matters



[www.unodc.org/unodc/en/data-and-analysis/index.html](http://www.unodc.org/unodc/en/data-and-analysis/index.html)



# UNODC

United Nations Office on Drugs and Crime

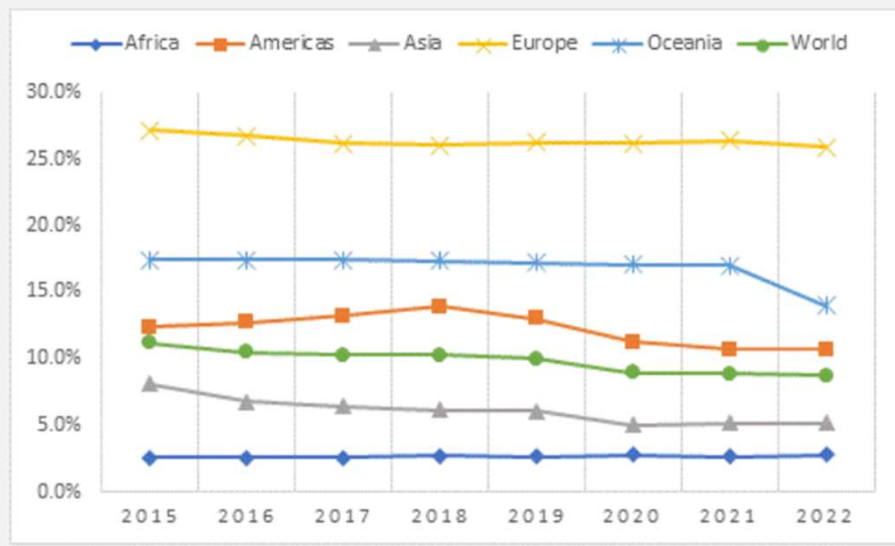




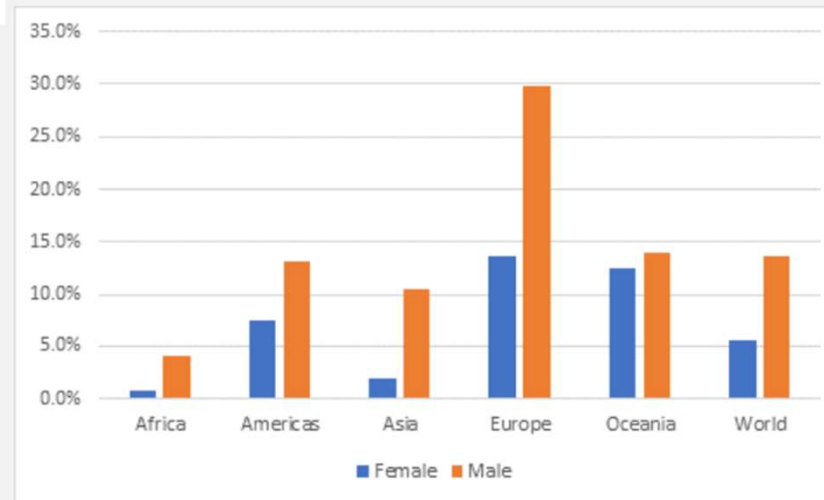
**3 GOOD HEALTH AND WELL-BEING**

## Coverage of treatment for people with drug use disorders

Estimated proportion of people with drug use disorders that received treatment interventions, globally and by region, 2015-2022



Estimated proportion of people with drug use disorders that receive treatment, by region and sex, 2022





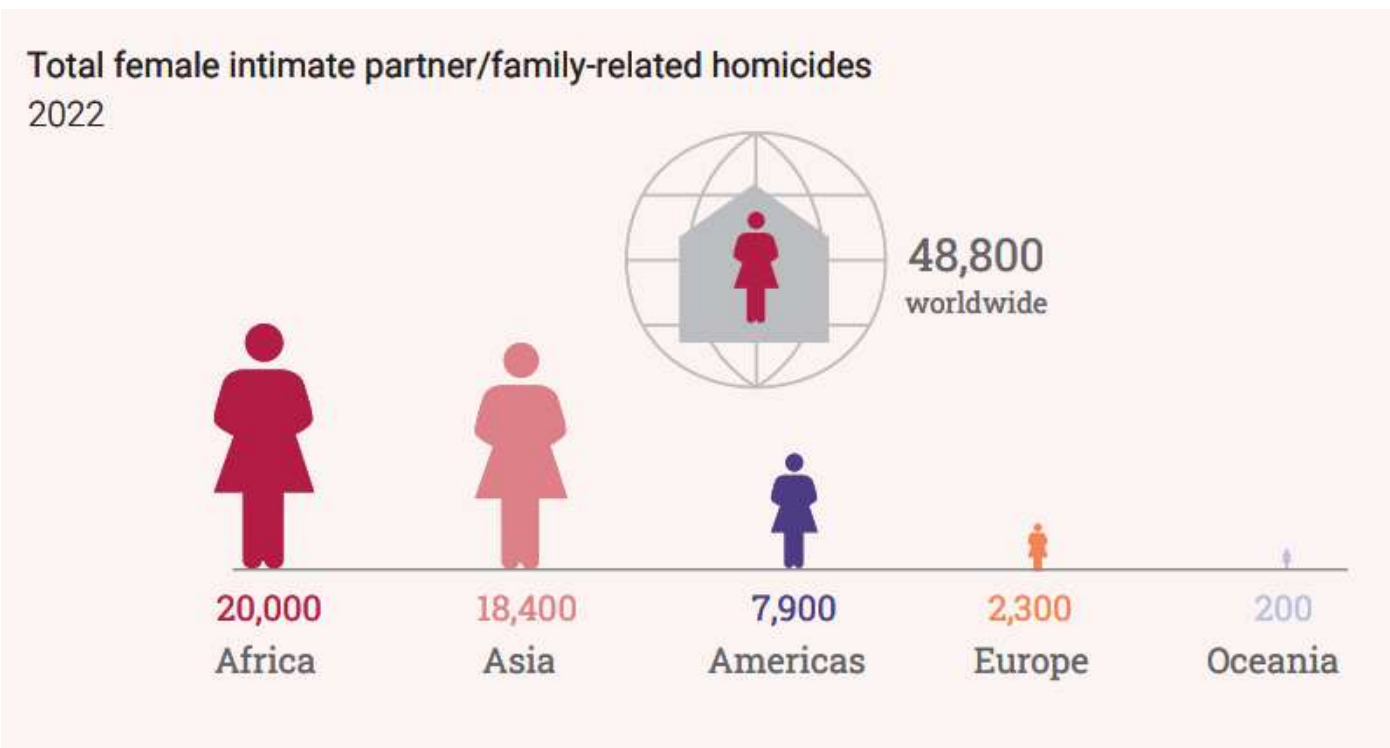
**UNODC**

United Nations Office on Drugs and Crime



**5 GENDER EQUALITY**

# Femicide





**UNODC**

United Nations Office on Drugs and Crime

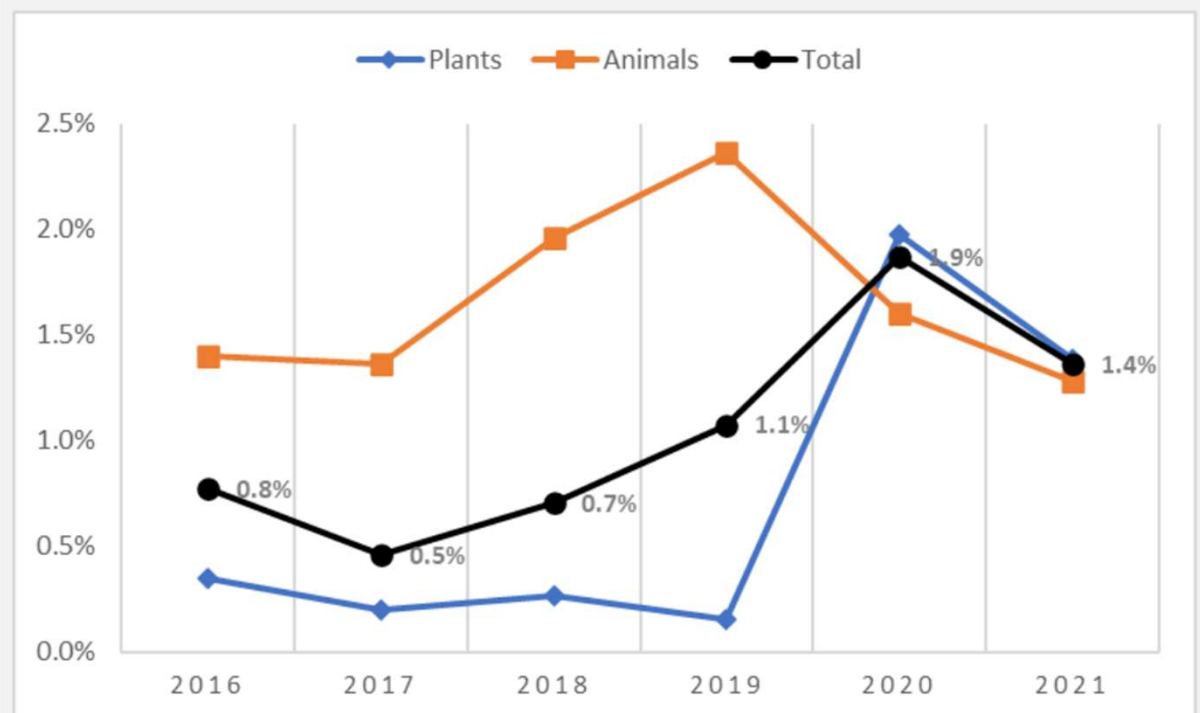


**15** LIFE ON LAND



Illegal trade of protected wildlife species

Proportion of the estimated value of wildlife trade represented by wildlife seizures, by total, animal or plant products, 2016-2021





**16** PEACE, JUSTICE AND STRONG INSTITUTIONS

## Homicide

Figure 2: Share of homicides, by type and selected regions, 2021 or latest year available

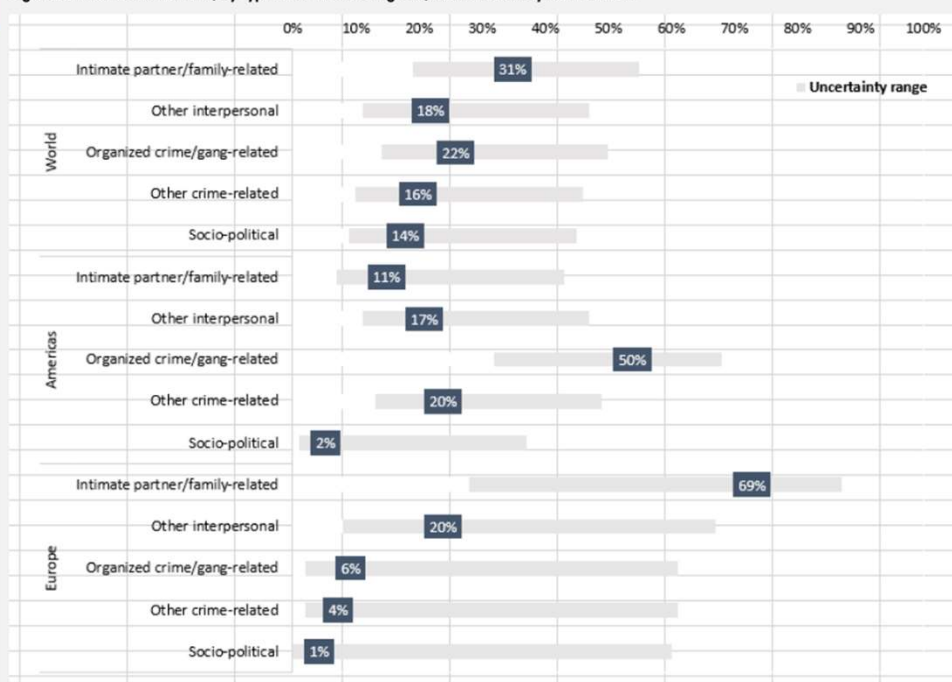
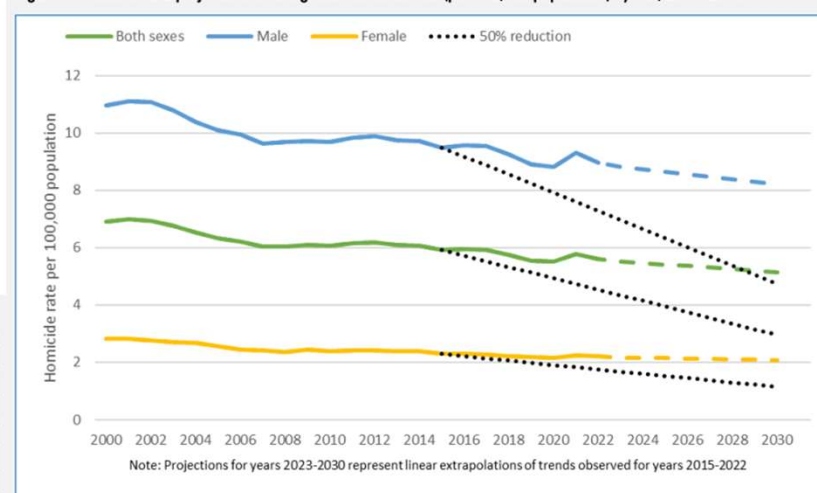


Figure 1: Trends in and projections of the global homicide rate (per 100,000 population) by sex, 2000–2030







# UNODC

United Nations Office on Drugs and Crime



## 16 PEACE, JUSTICE AND STRONG INSTITUTIONS



# Equal access to justice

Figure 2: Unsented detainees as a proportion of overall prison population (2015 and 2022)

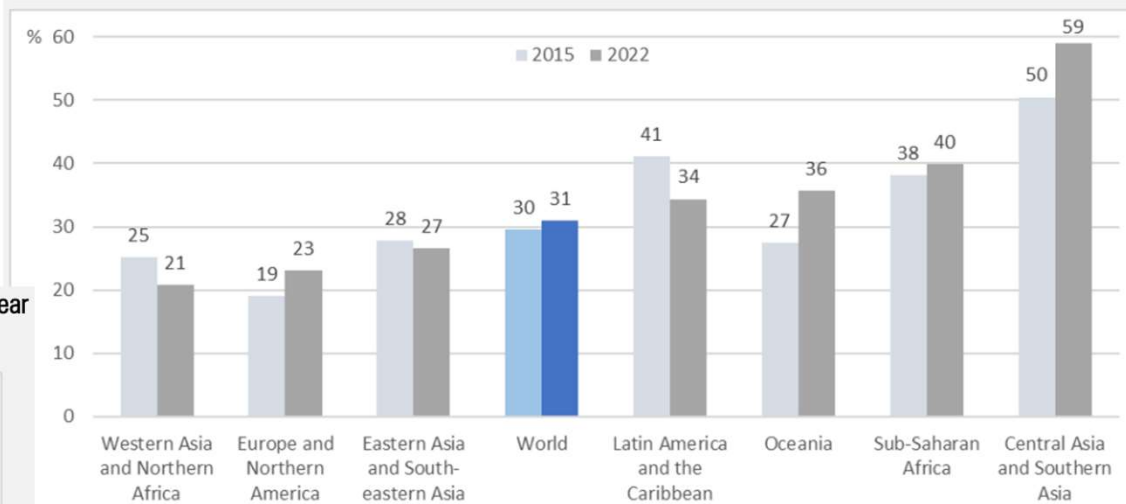
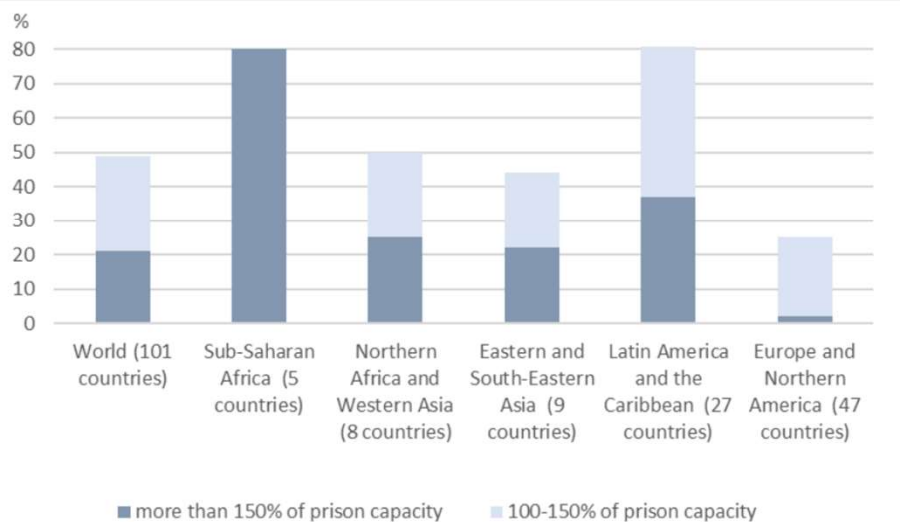


Figure 3: Percentage of countries where prisoners outnumber the prison capacity (2022 or latest year available)

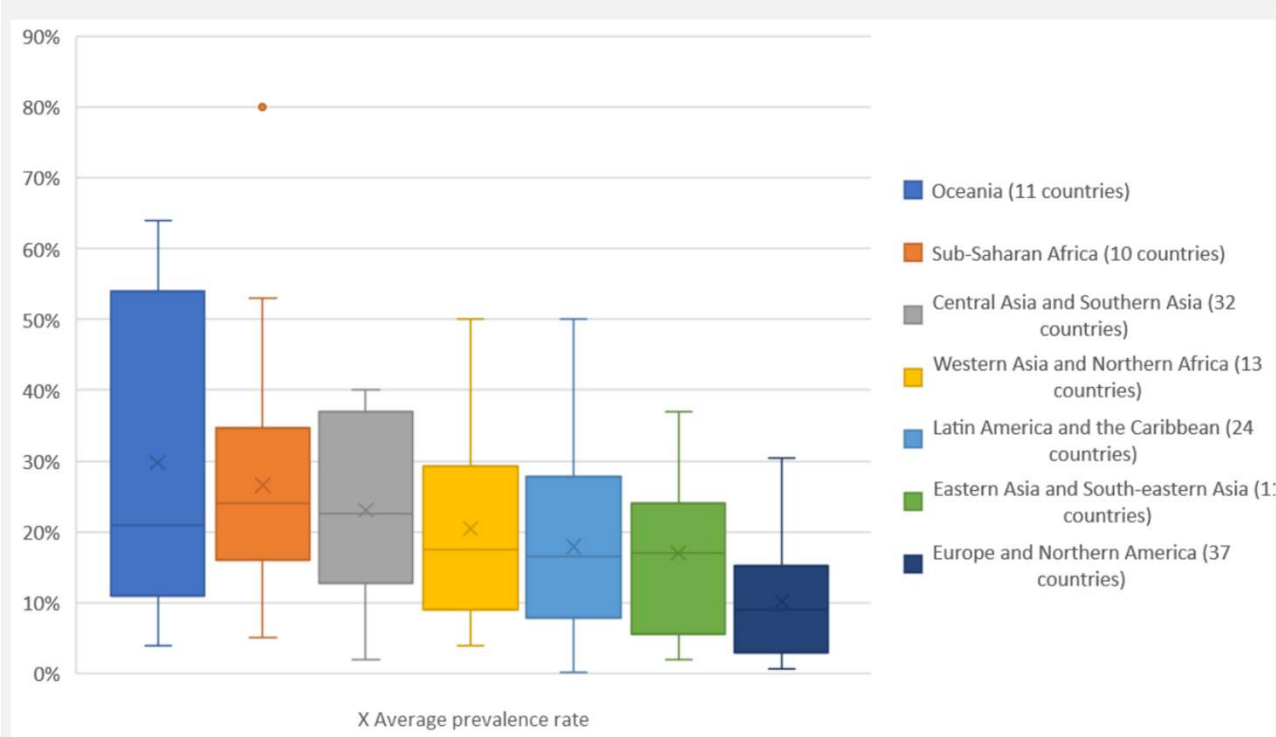




**16** PEACE, JUSTICE AND STRONG INSTITUTIONS

## Corruption

Figure 1: Prevalence of bribery experienced by individuals in the last 12 months by region, latest available year between 2015 and 2022







# Firearm trafficking and Illicit Financial Flows



### 33%

of seized weapons were successfully traceable  
2016-2021

Figure 16. Annual average inward IFFs (best estimates and/or ranges, in millions of USD) resulting from drug trafficking, derived from selected country pilots

