



**UNODC**  
United Nations Office on Drugs and Crime



World  
Drug  
Report

2015



**UNODC**  
United Nations Office on Drugs and Crime



World  
Drug  
Report

2015



# World Drug Report 2015

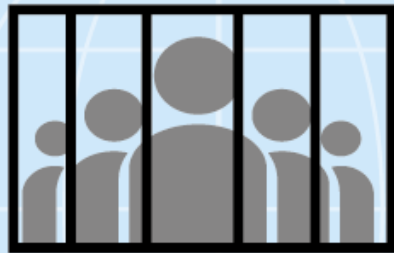
Press kit





Heroin use in prisons is much higher than among general population

*Heroin use in prison*



**5%**

*Heroin use among general population*



**0.35%**



**UNODC**

United Nations Office on Drugs and Crime

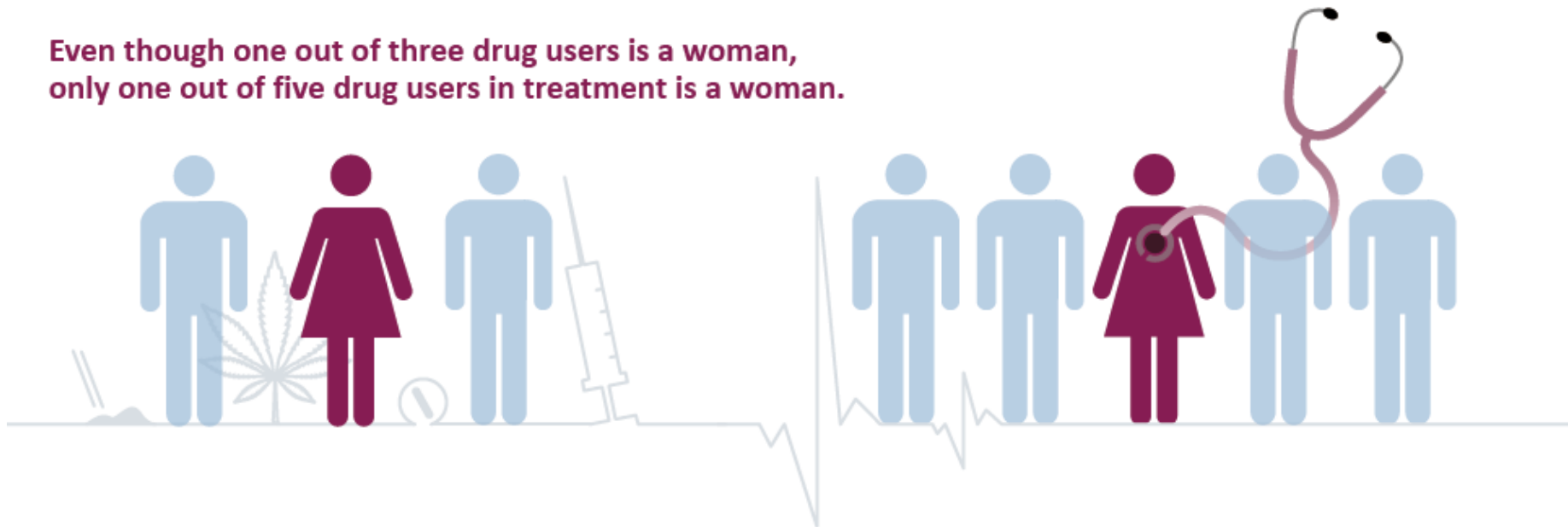


World  
Drug  
Report

2015

## Gender

**Even though one out of three drug users is a woman, only one out of five drug users in treatment is a woman.**





UNODC

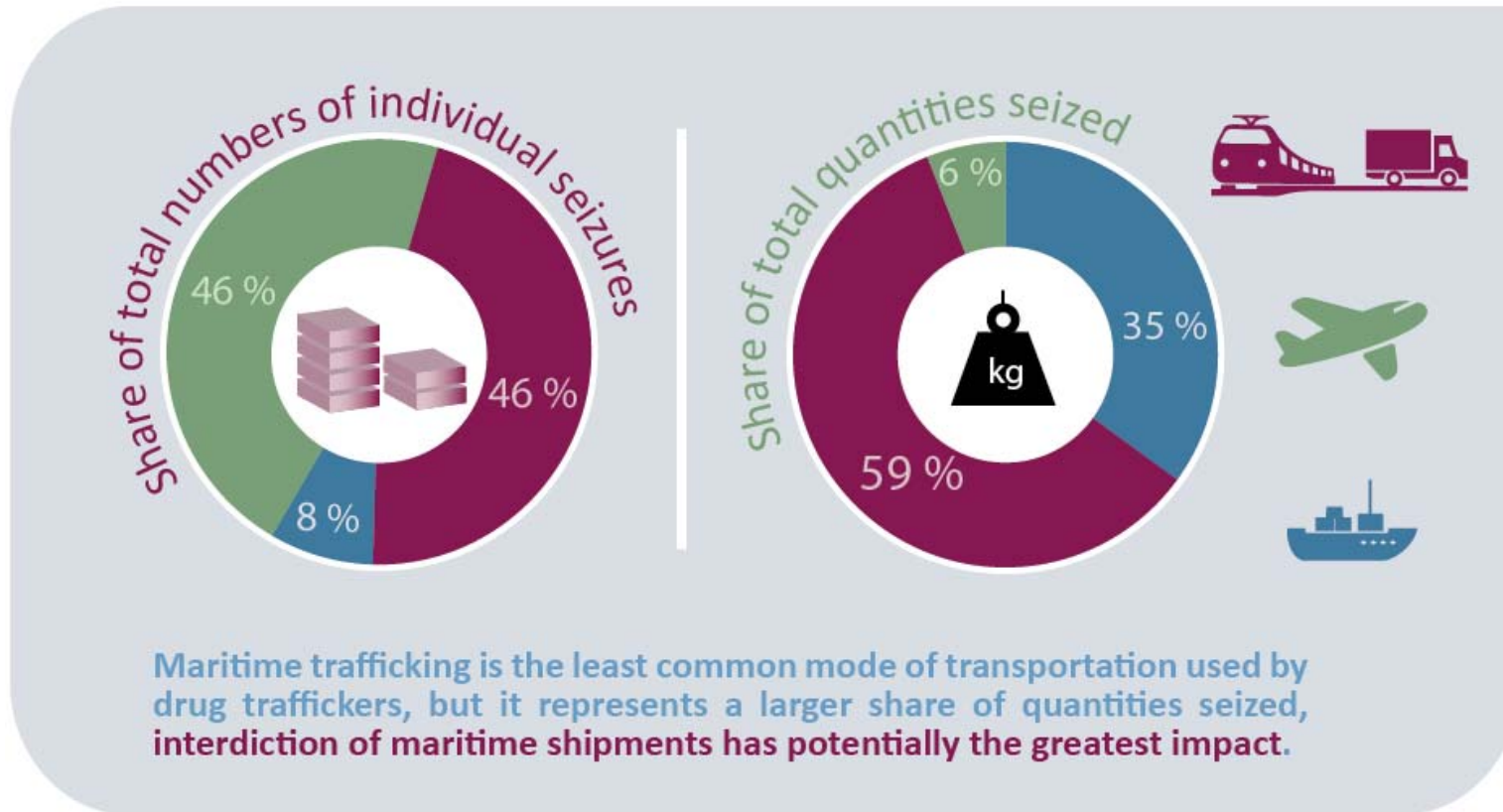
United Nations Office on Drugs and Crime



World Drug Report

2015

Mode of transportation reported in individual drug seizure cases, 2006-2008 and 2009-2014

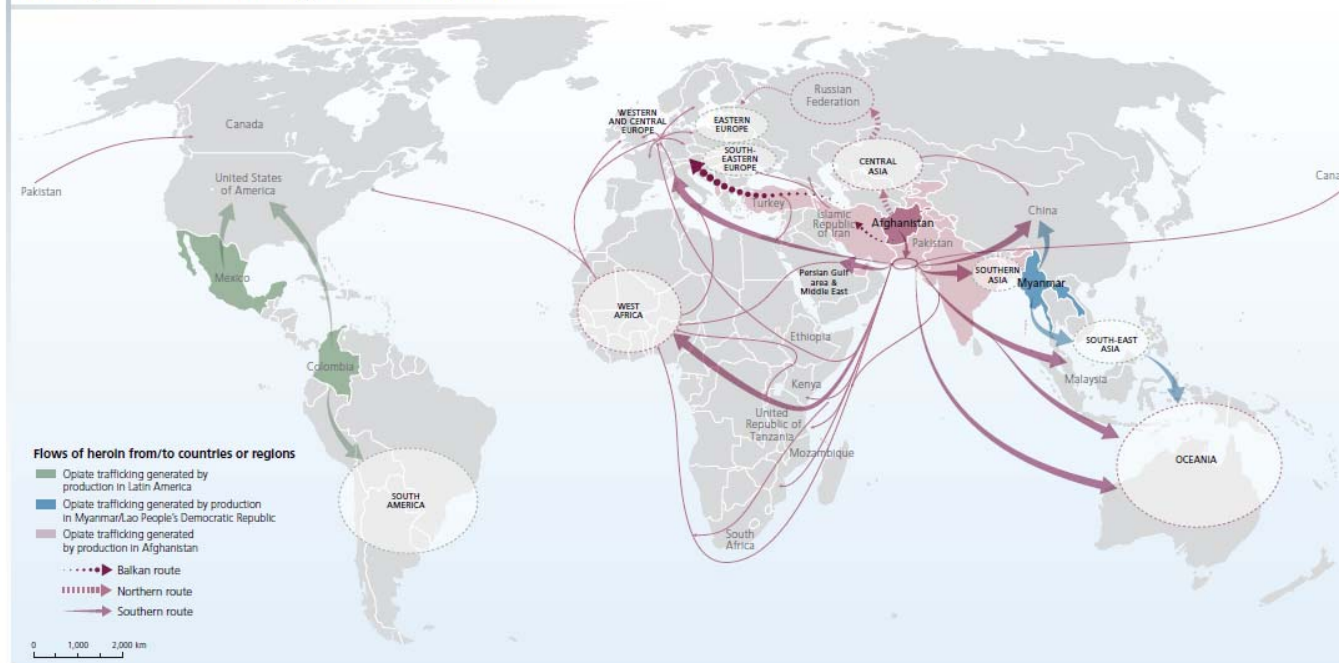


Maritime trafficking is the least common mode of transportation used by drug traffickers, but it represents a larger share of quantities seized, interdiction of maritime shipments has potentially the greatest impact.



# Opiates

Main global trafficking flows of opiates



Sources: UNODC, responses to annual report questionnaire and individual drug seizure database.

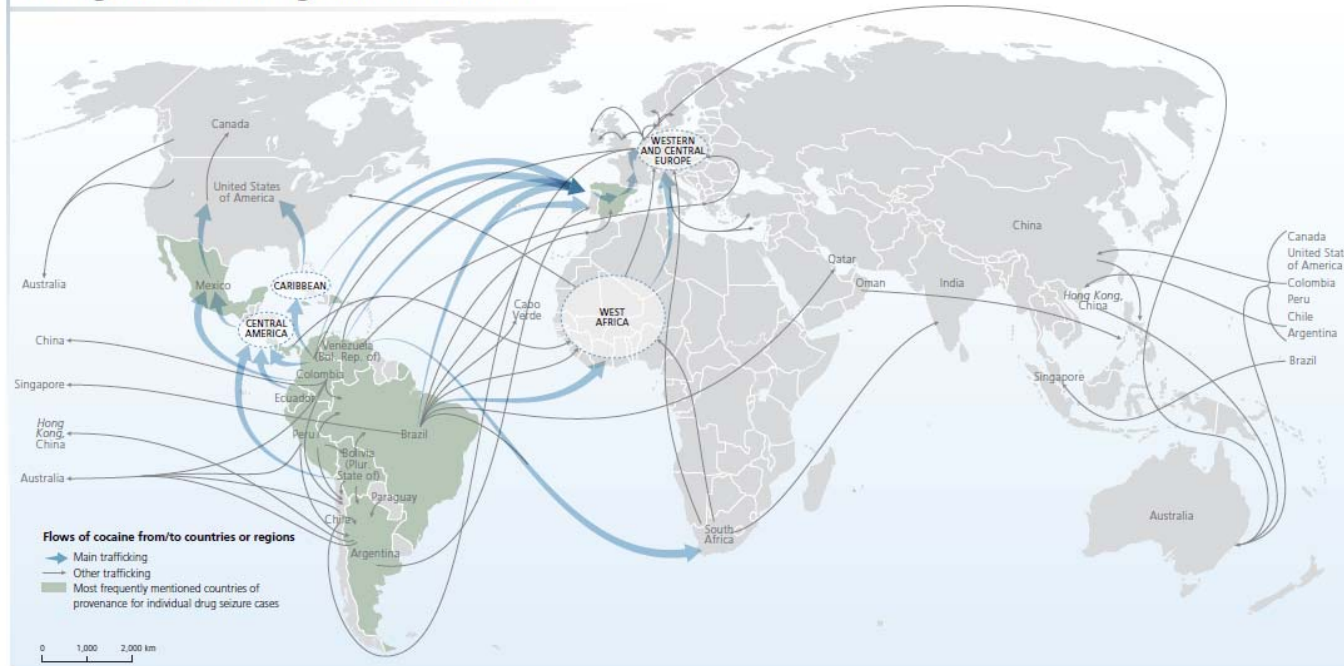
Notes: The trafficking routes represented on this map should be considered broadly indicative and based on data analyses rather than definitive route outlines. Such analyses are based on data related to official drug seizures along the trafficking route as well as official country reports and responses to annual report questionnaires. Routes may deviate to other countries that lie along the routes and there are numerous secondary flows that may not be reflected.

The boundaries shown on this map do not imply official endorsement or acceptance by the United Nations. Dashed lines represent undetermined boundaries. The dotted line represents approximately the Line of Control in Jammu and Kashmir agreed upon by India and Pakistan. The final status of Jammu and Kashmir has not yet been agreed upon by the parties. The final boundary between the Sudan and South Sudan has not yet been determined.





## Cocaine Main global trafficking flows of cocaine



Source: UNODC, responses to annual report questionnaire and individual drug seizure database.

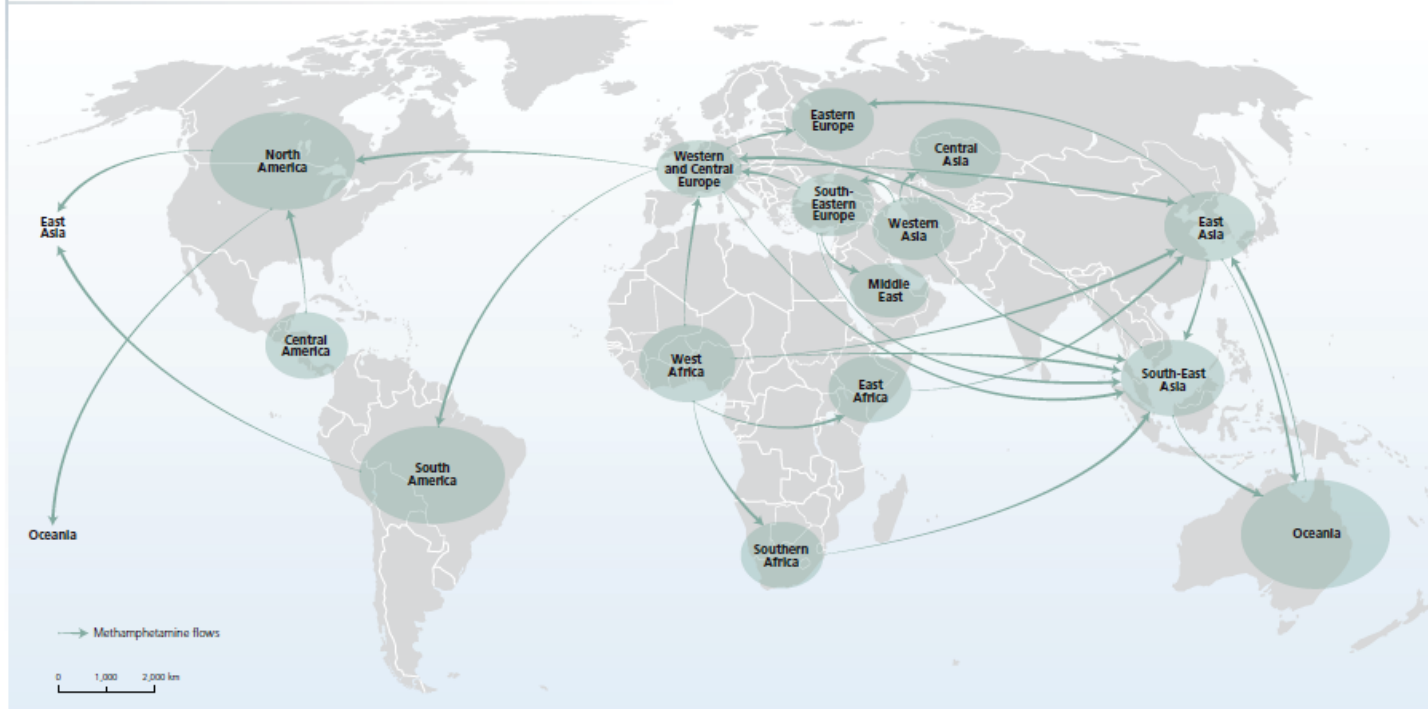
Notes: The trafficking routes represented on this map should be considered broadly indicative and based on data analyses rather than definitive route outlines. Such analyses are based on data related to official drug seizures along the trafficking routes as well as official country reports and responses to annual report questionnaires. Routes may deviate to other countries that lie along the routes and there are numerous secondary flows that may not be reflected.

The boundaries shown on this map do not imply official endorsement or acceptance by the United Nations. Dashed lines represent undetermined boundaries. The dotted line represents approximately the Line of Control in Jammu and Kashmir agreed upon by India and Pakistan. The final status of Jammu and Kashmir has not yet been agreed upon by the parties. The final boundary between the Sudan and South Sudan has not yet been determined.



## Methamphetamine

Methamphetamine flows as perceived by recipient countries, 2011-2013



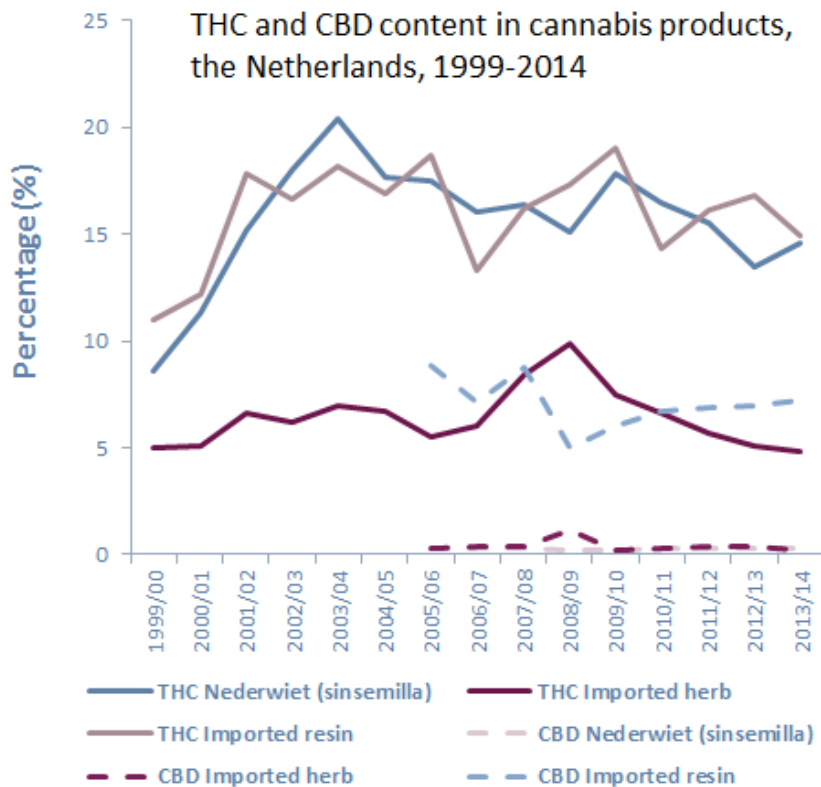
Source: UNODC, responses to annual report questionnaire, 2011-2013.

*Note: The origins of the flow arrows do not necessarily indicate the source/manufacture of methamphetamine. These arrows represent the flows as perceived by recipient countries. Flow arrows represent the direction of methamphetamine trafficking and are not an indication of the quantity trafficked.*

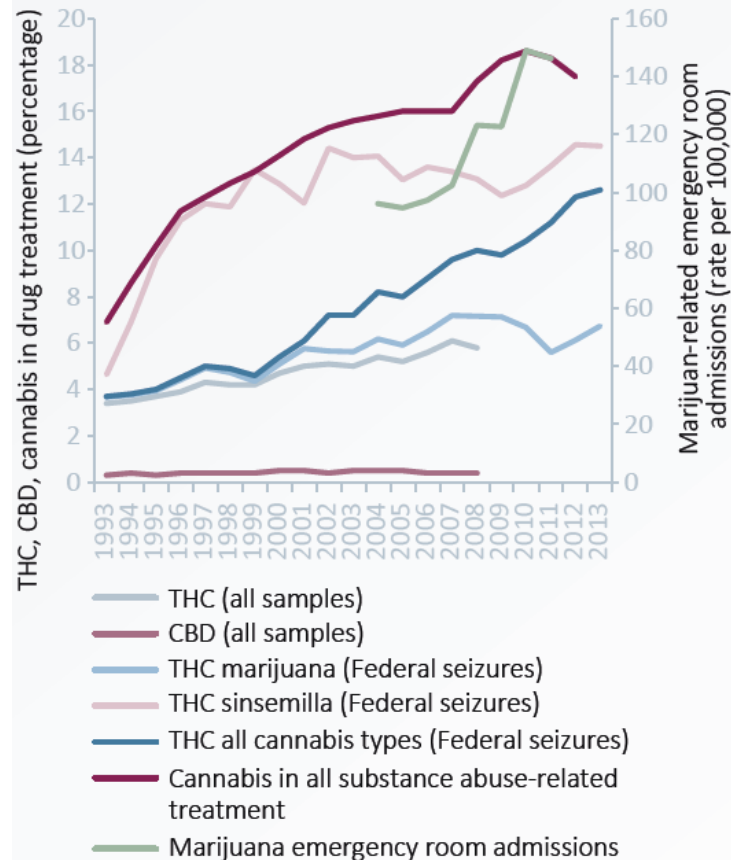
*The boundaries shown on this map do not imply official endorsement or acceptance by the United Nations. Dashed lines represent undetermined boundaries. The dotted line represents approximately the Line of Control in Jammu and Kashmir agreed upon by India and Pakistan. The final status of Jammu and Kashmir has not yet been agreed upon by the parties. The final boundary between the Sudan and South Sudan has not yet been determined.*



## Cannabis is becoming a more potent and harmful drug



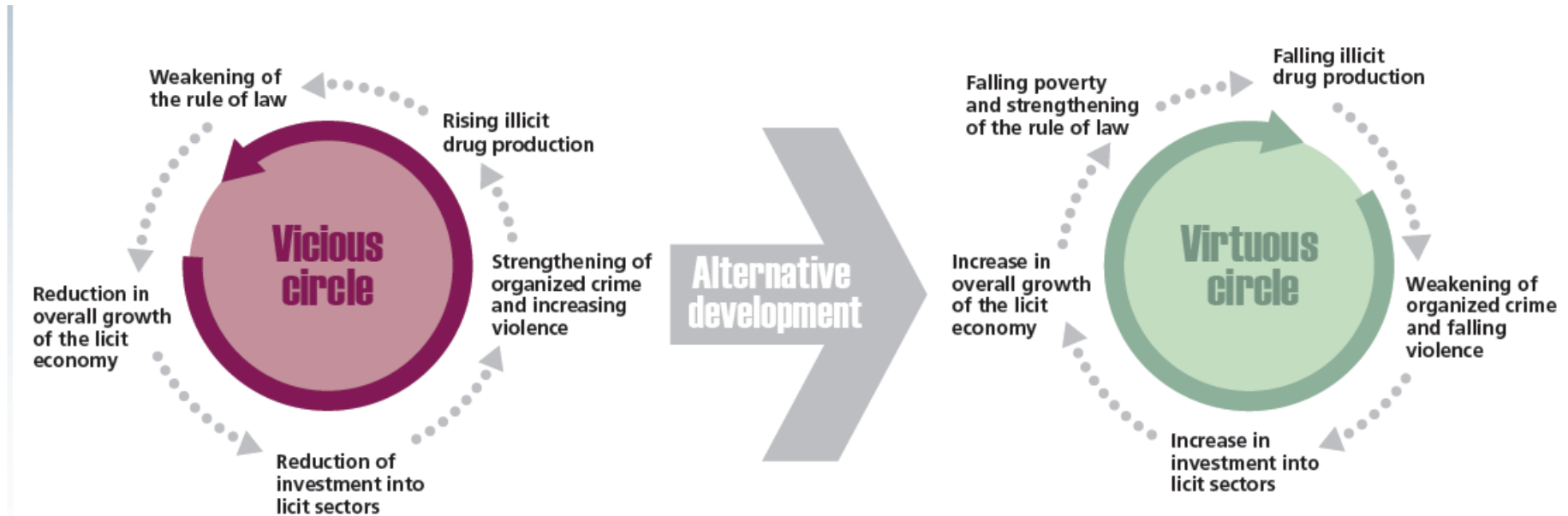
THC and CBD content in cannabis samples, cannabis-treatment admissions and marijuana-related hospital emergencies, United States, 1993-2013







## Impact of Alternative Development



Source: UNODC.