

STATISTICS AND TRENDS ON ILLICIT DRUGS

2014 Global Estimate of drug use

	Annual prevalence (%)*	Number of users (thousands)*
All illicit drug use	5.2 (3.3 – 7.1)	247,000 (157,000 – 337,000)
Problem drug use **	0.6 (0.4 – 0.9)	29,600 (16,700 – 42,400)
Cannabis	3.8 (2.7 – 4.9)	182,500 (127,540 – 233,650)
Opioids (opiates and prescription opioids)	0.7 (0.6 – 0.8)	33,120 (28,570 – 38,520)
Opiates	0.4 (0.3 – 0.5)	17,440 (13,740 – 21,590)
Cocaine	0.4 (0.3 – 0.5)	18,260 (14,880 – 22,080)
Amphetamines	0.8 (0.3 – 1.2)	35,650 (15,340 – 55,900)
“Ecstasy”	0.4 (0.2 – 0.6)	19,400 (9,890 – 29,010)

* The prevalence (%) and numbers have been rounded

** Those who engage in high risk consumption of drugs, e.g. people who inject drugs, use drugs on a daily bases and or people diagnosed with drug use disorders or dependence based on clinical criteria contained in ICD-10 or DSM V.

2014 Joint UNODC/UNAIDS/WHO/WB Estimates of People who inject drugs and living with HIV

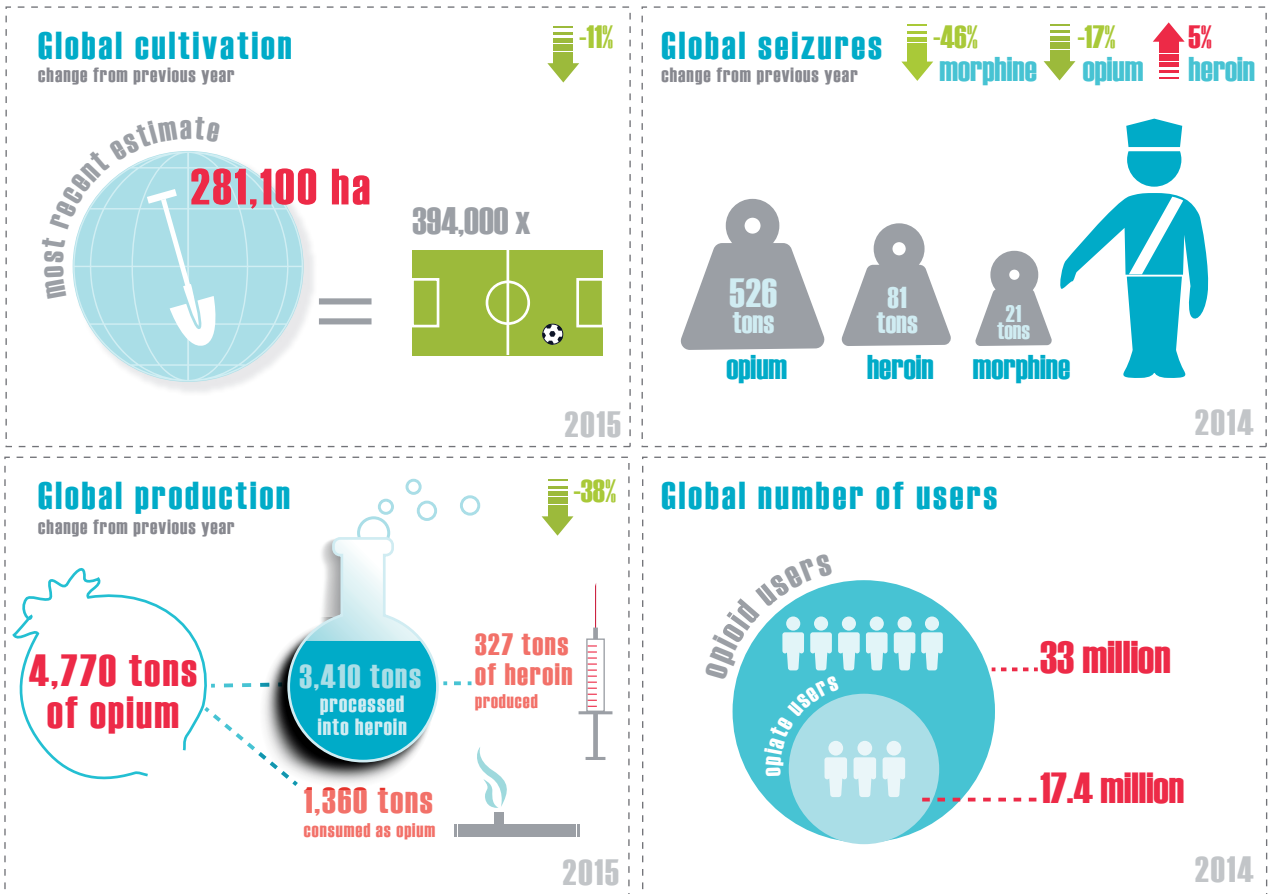
	Prevalence (%)*	Number of users (thousands)*
People who inject drugs	0.25 (0.18 – 0.40)	11,700 (8,400 – 19,000)
HIV among PWID	14.0	1,600 (970 – 3,900)

Drug related mortality

Rates of drug related deaths per million population aged 15-64 years	43.5 (23.8 – 52.5)
Number of drug related deaths	207,400 (113,700 – 250,100)

OPIATES

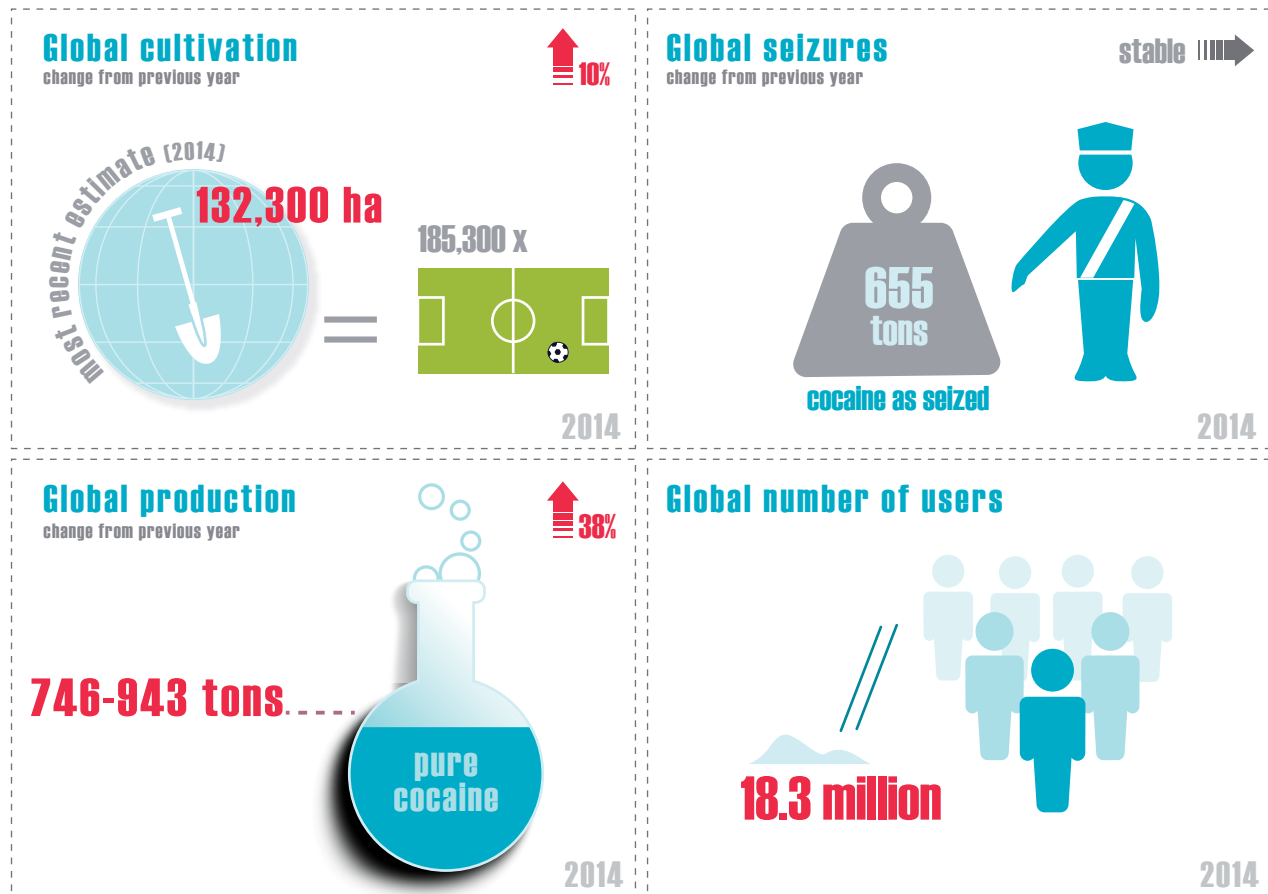
Key figures



Note: Opioids include the non-medical use of prescription opioids and opiates (opiates include opium and heroin).

COCAINE

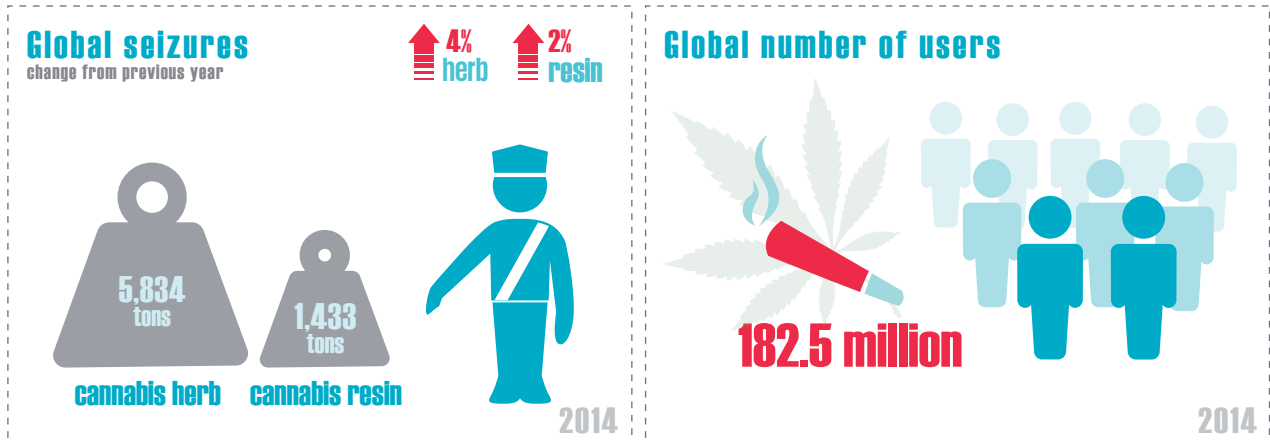
Key figures



Note: Cocaine seizures are mostly of cocaine hydrochloride (of varying purity), but also include other cocaine products (paste, base and "crack").

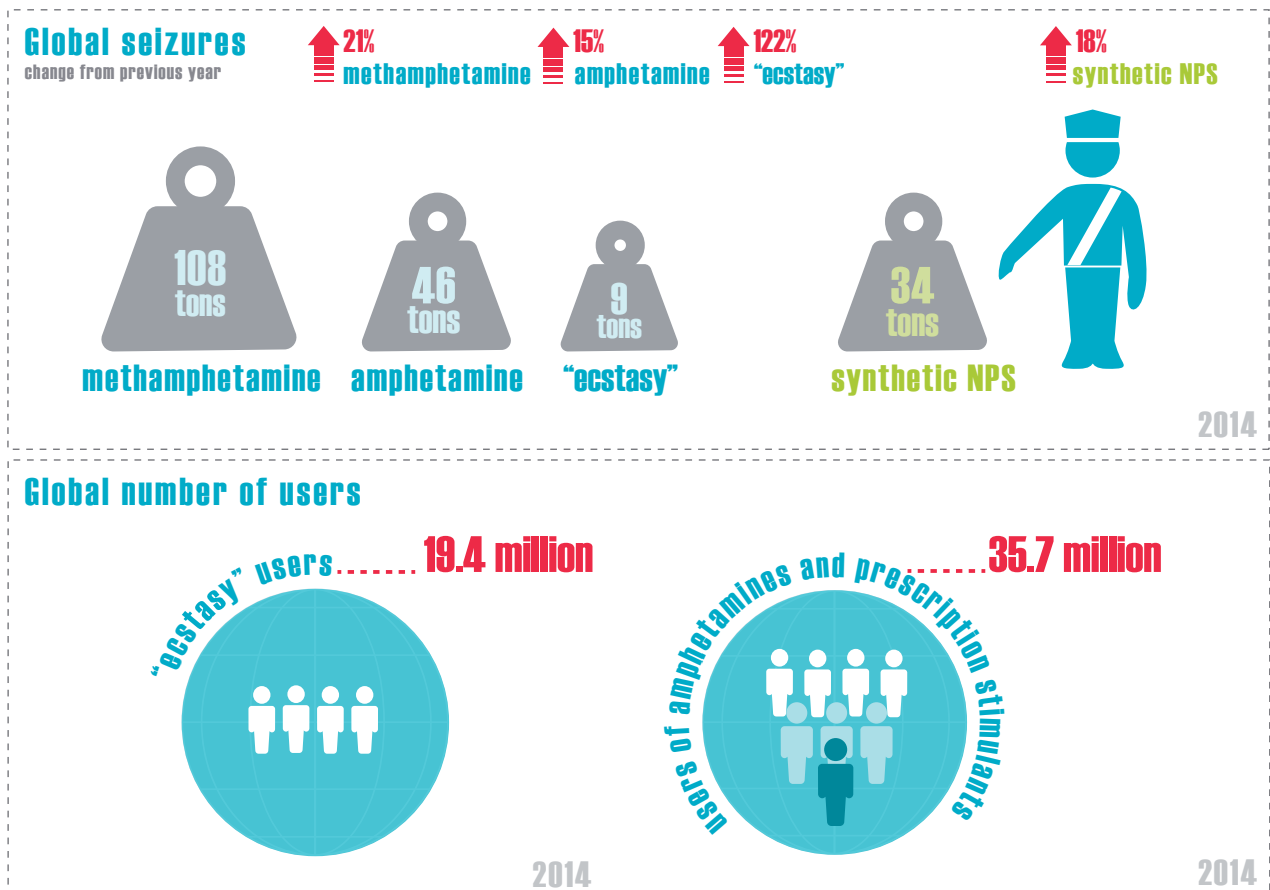
CANNABIS

Key figures



SYNTHETIC DRUGS: AMPHETAMINE-TYPE STIMULANTS AND NEW PSYCHOACTIVE SUBSTANCES

Key figures



Note: Amphetamines include both amphetamine and methamphetamine. Seizures of synthetic NPS refer to synthetic NPS only and do not include seizures of plant-based substances and ketamine.